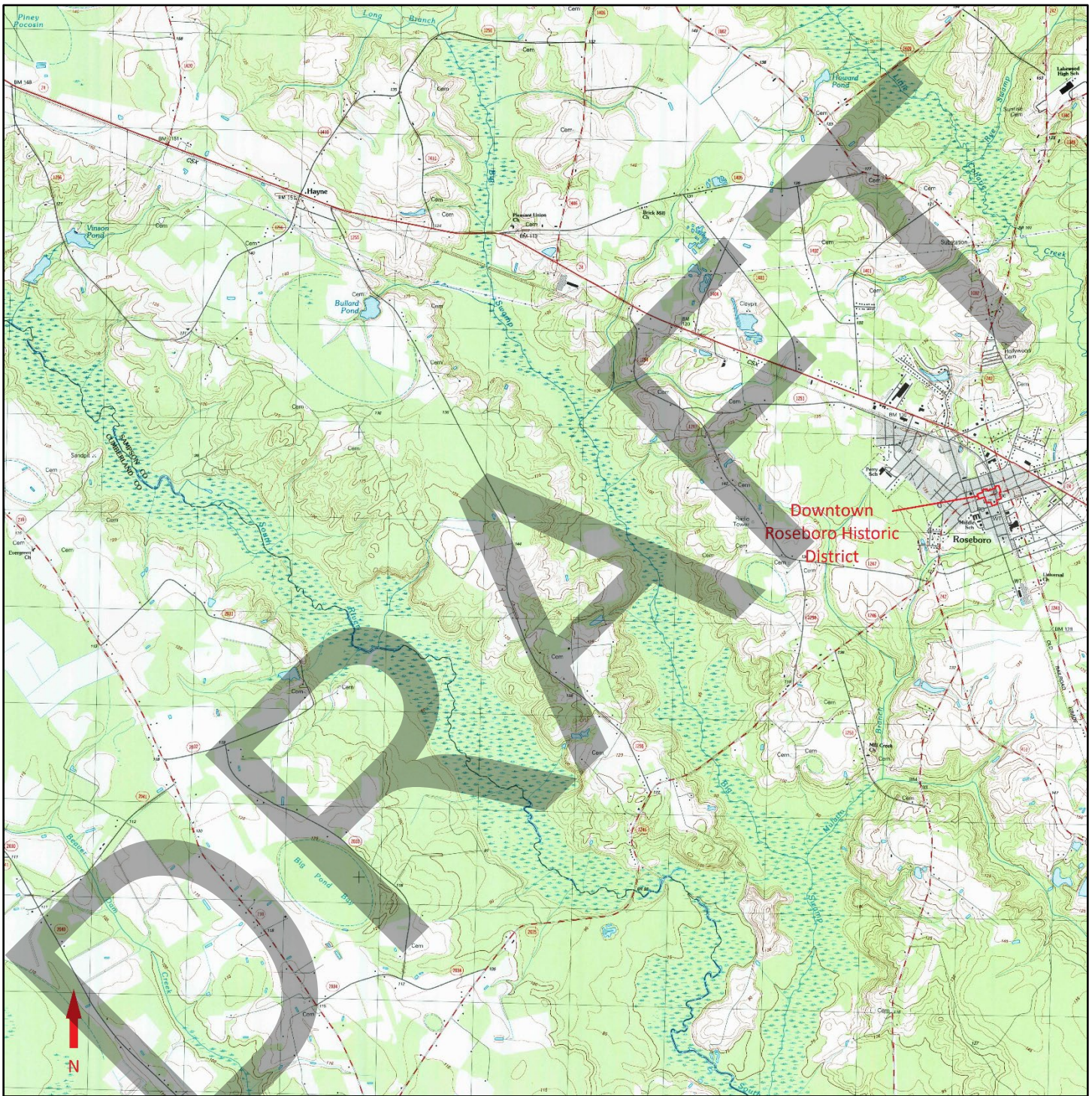


LOCATION MAP
Downtown Roseboro Historic District (SP0473)
Sampson County, NC

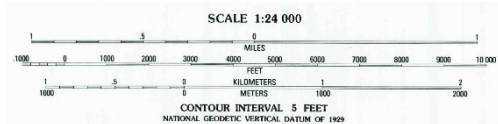


Source:
USGS Topographic Map
7.5 minute series
Roseboro Quadrangle (NC) 1987

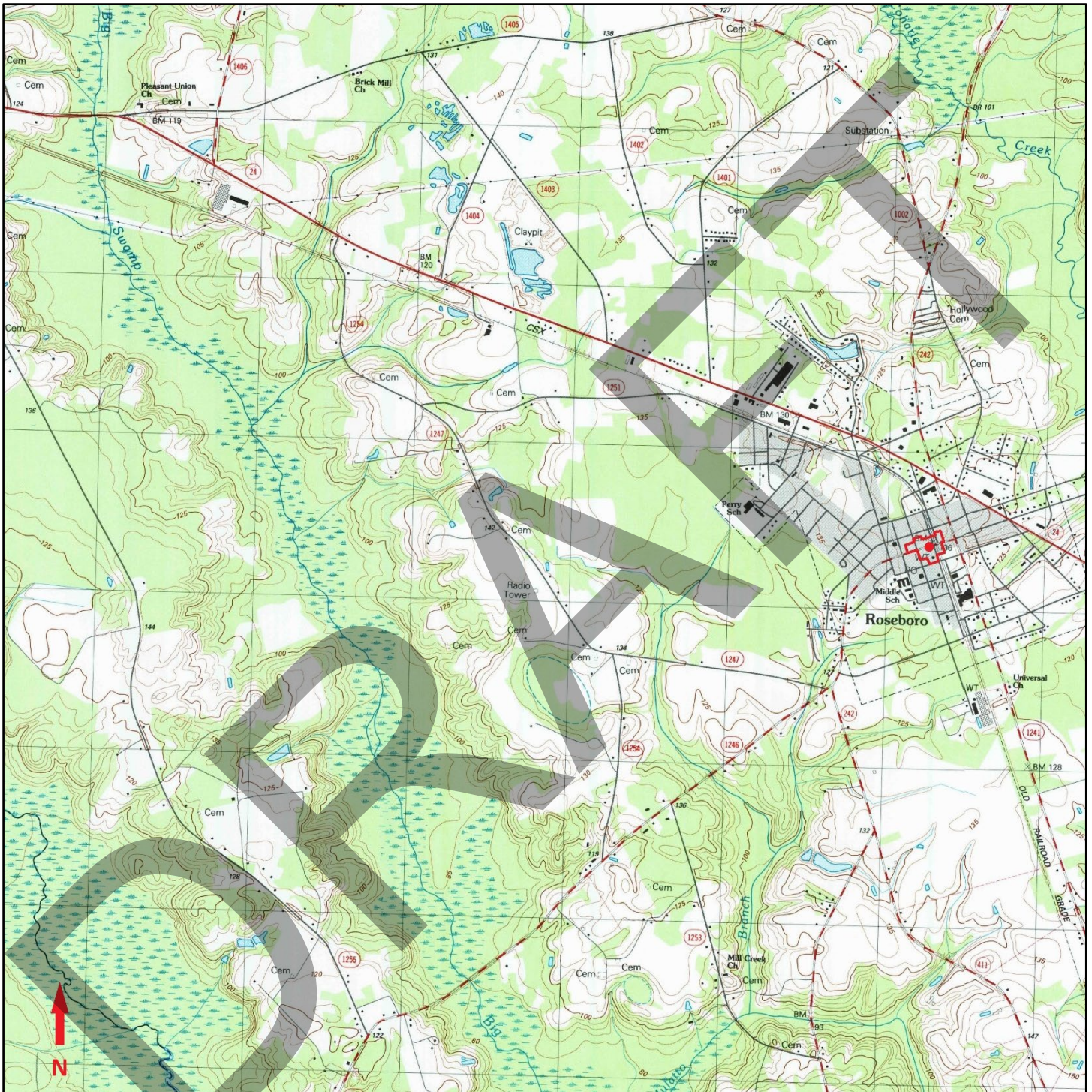
Map prepared by:
Daria Gasparini, Robinson & Associates
August 15, 2025

Downtown Roseboro Historic District (SP0473)

— District Boundary



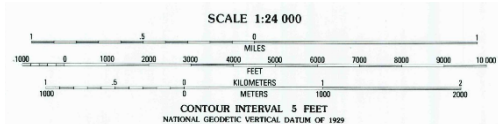
COORDINATES MAP
Downtown Roseboro Historic District (SP0473)
Sampson County, NC



Source:
USGS Topographic Map
7.5 minute series
Roseboro Quadrangle (NC) 1987

Map prepared by:
Daria Gasparini, Robinson & Associates
August 15, 2025

Downtown Roseboro Historic District (SP0473)
Datum: WGS84
● Latitude/Longitude: 34.952616, -78.511053
— District Boundary



NATIONAL REGISTER BOUNDARY MAP
Downtown Roseboro Historic District (SP0473)
Sampson County, NC



Source:
HPOWEB

Map prepared by:
Daria Gasparini, Robinson & Associates
August 15, 2025

Key:

- | | |
|----------------------------|-----------------------------|
| Historic District Boundary | NC Noncontributing Resource |
| Contributing Resource | VL Vacant Lot |

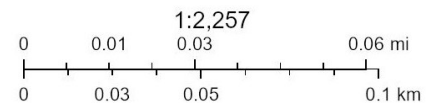
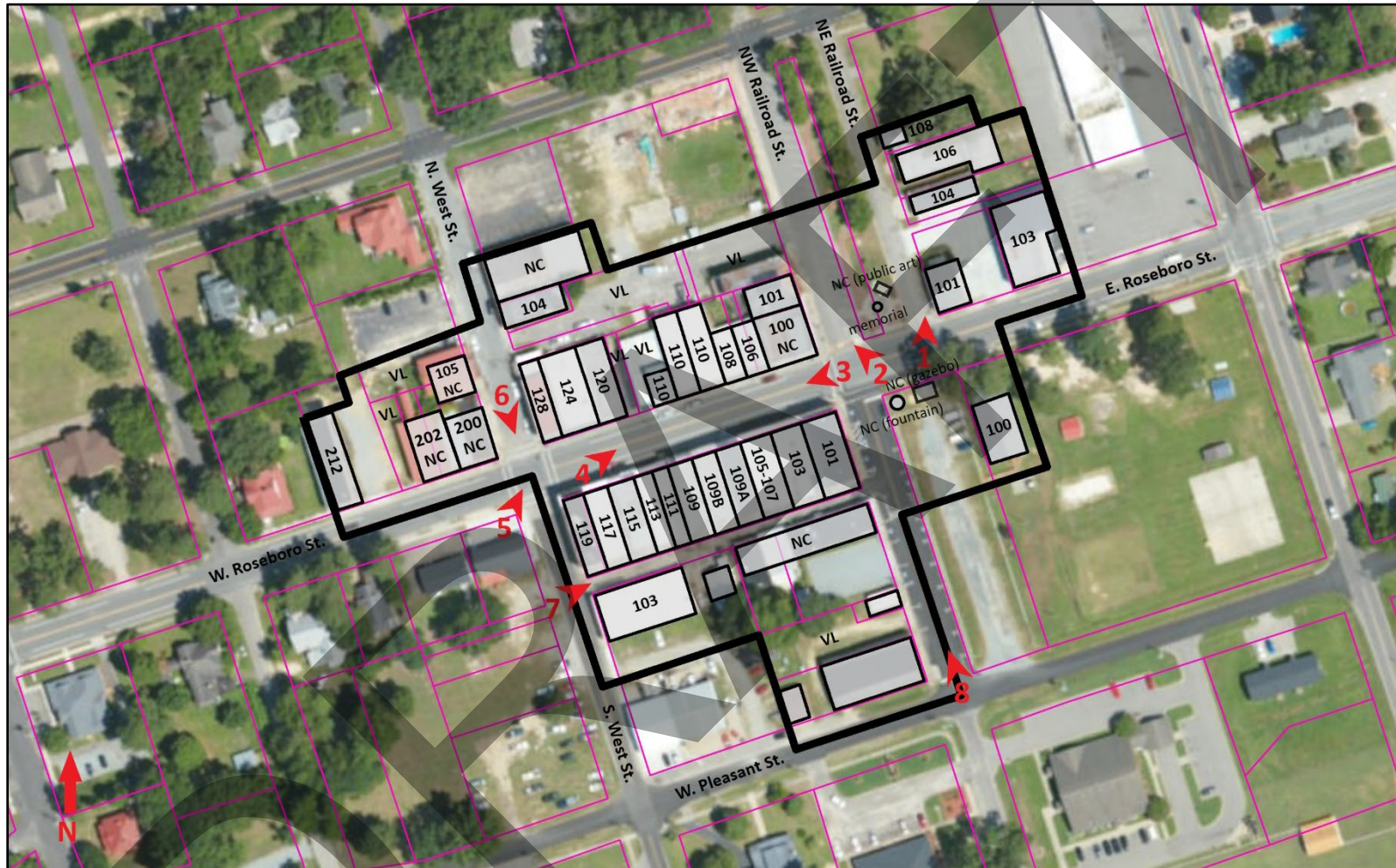


PHOTO KEY (1 of 2)
Downtown Roseboro Historic District (SP0473)
Sampson County, NC



Source:
HPOWEB

Map prepared by:
Daria Gasparini, Robinson & Associates
August 15, 2025

Key:

- | | |
|----------------------------|-----------------------------|
| Historic District Boundary | NC Noncontributing Resource |
| Contributing Resource | VL Vacant Lot |

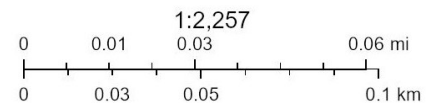
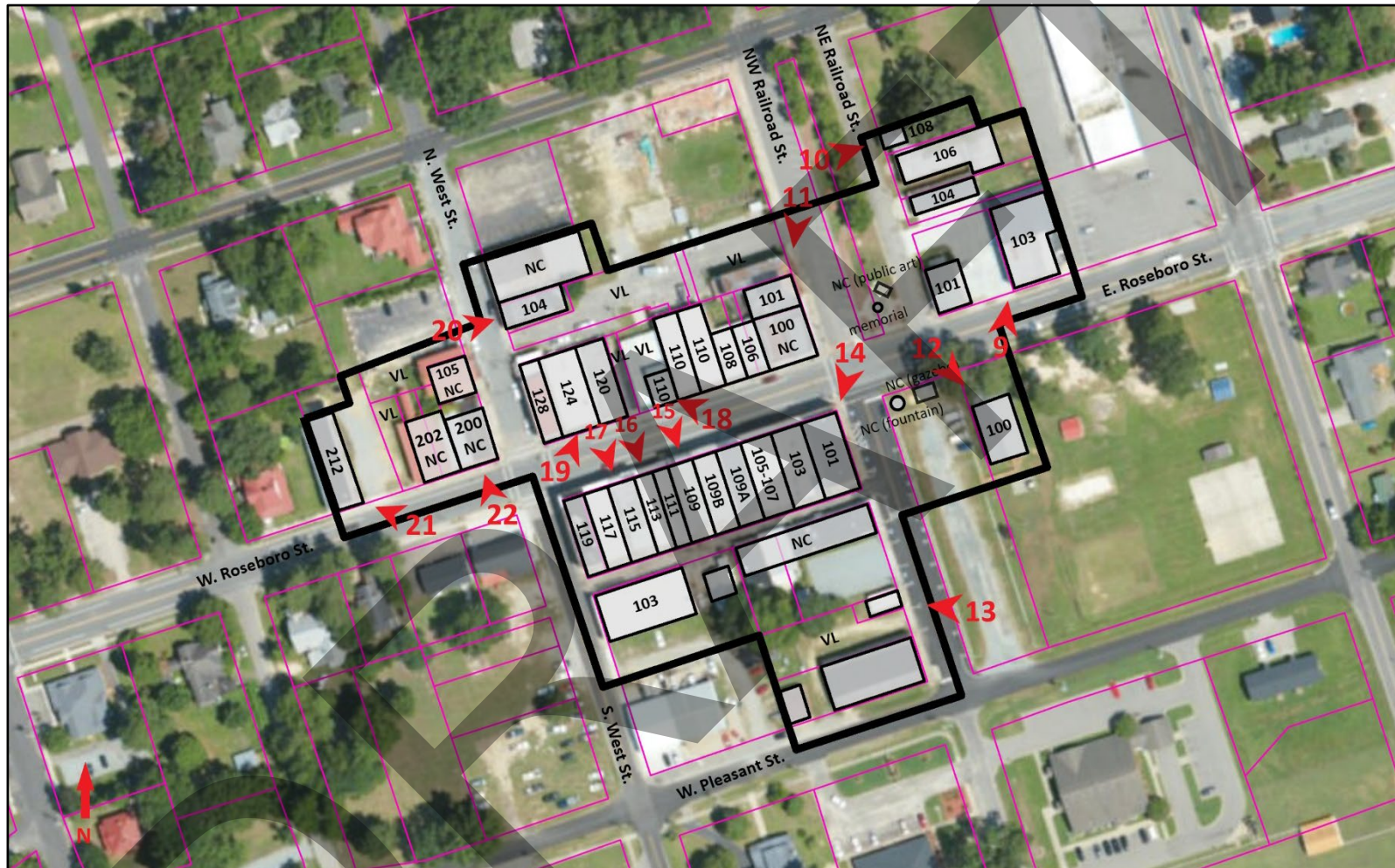


PHOTO KEY (2 of 2)
Downtown Roseboro Historic District (SP0473)
Sampson County, NC



Source:
HPOWEB

Map prepared by:
Daria Gasparini, Robinson & Associates
August 15, 2025

Key:

— Historic District Boundary



Noncontributing Resource



Contributing Resource

VL

Vacant Lot

