

United States Department of the Interior
National Park Service

National Register of Historic Places
Continuation Sheet

LIVINGSTONE COLLEGE HD AMENDMENT

Name of Property
ROWAN/NC

County and State

Name of multiple listing (if applicable)

Section number FIGURES Page 1

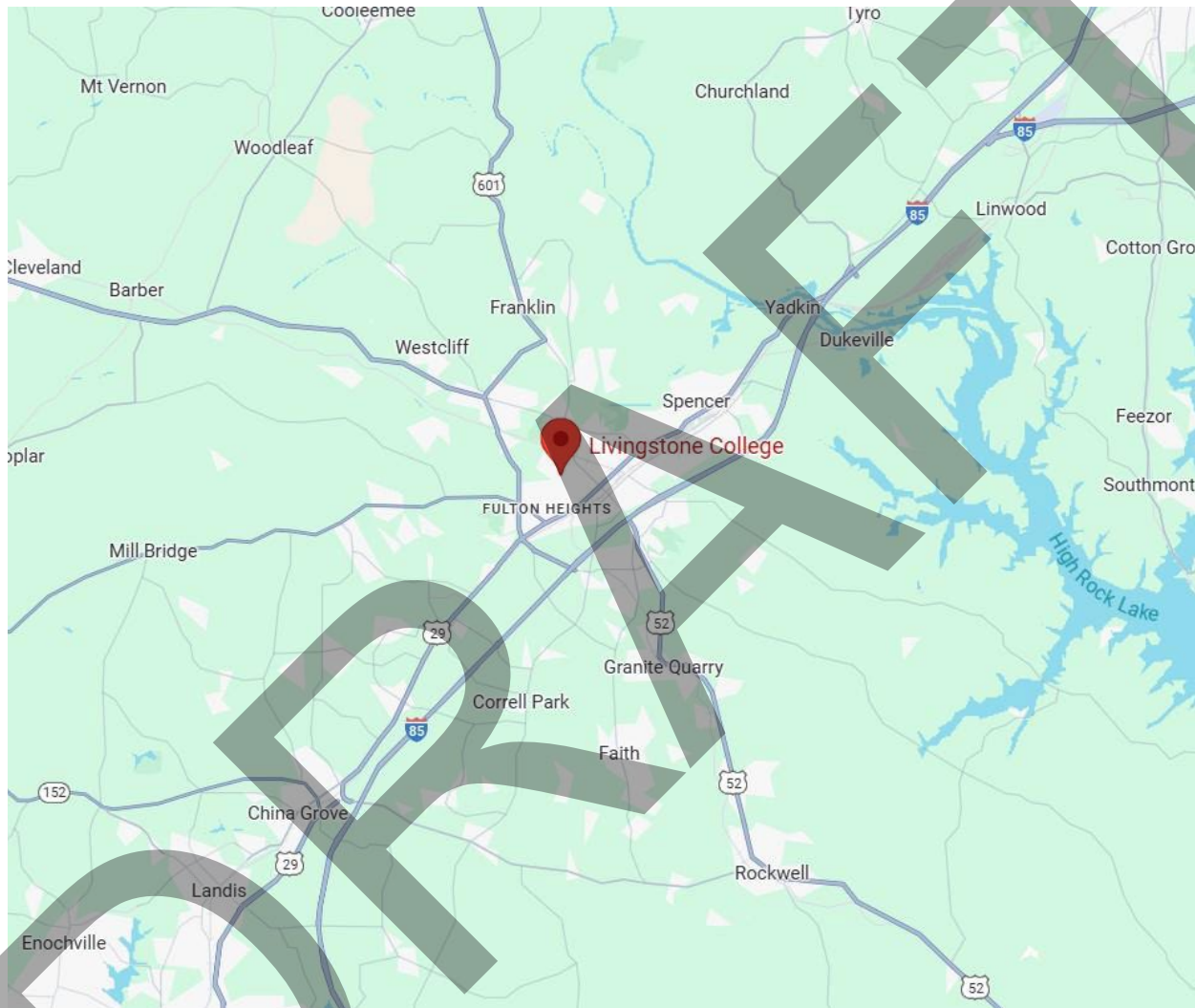


Figure 1: Livingstone College Historic District, Vicinity Map (Google Maps, accessed 5/31/2024).

United States Department of the Interior
National Park Service

National Register of Historic Places
Continuation Sheet

LIVINGSTONE COLLEGE HD AMENDMENT

Name of Property
ROWAN/NC

County and State

Name of multiple listing (if applicable)

Section number FIGURES Page 2

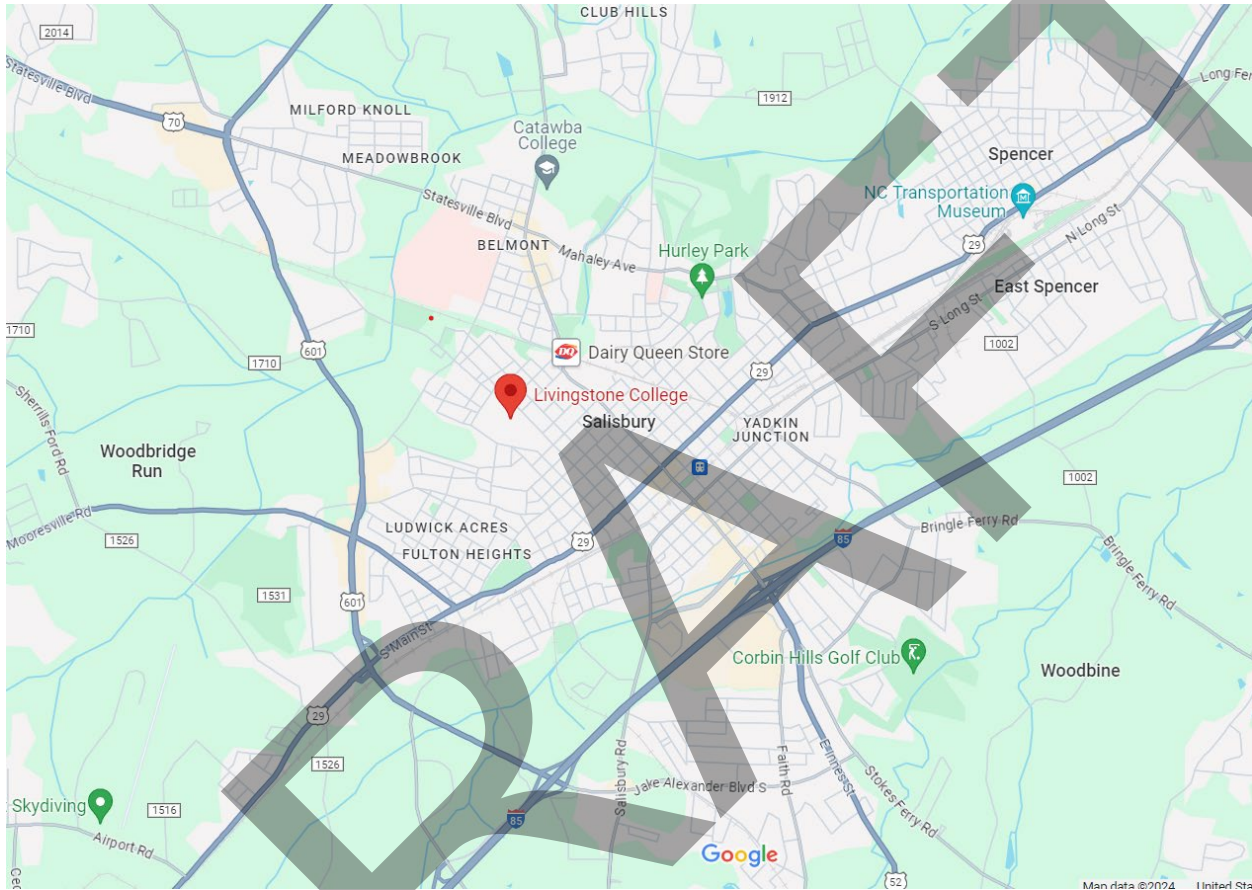


Figure 2: Livingstone College Location Map (Google Maps, accessed on 1/21/2025).

United States Department of the Interior
National Park Service

National Register of Historic Places
Continuation Sheet

LIVINGSTONE COLLEGE HD AMENDMENT

Name of Property

ROWAN/NC

County and State

Name of multiple listing (if applicable)

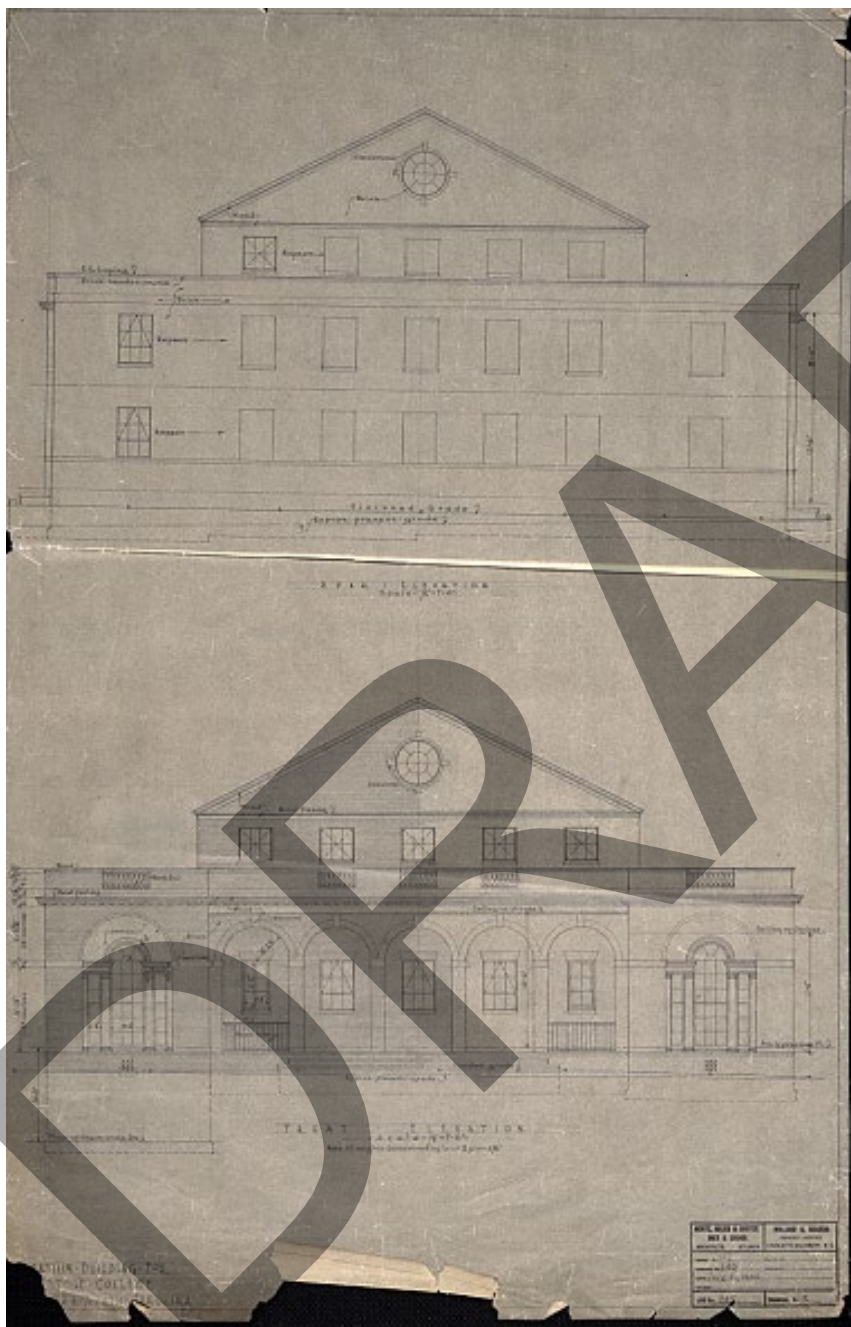
Section number FIGURES Page 3

Figure 3: Plan for William Johnson Trent Gymnasium (Courtesy Georgia Institute of Technology Library. Hentz, Reid & Adler Architectural Drawings Collection).

United States Department of the Interior
National Park Service

National Register of Historic Places
Continuation Sheet

LIVINGSTONE COLLEGE HD AMENDMENT

Name of Property

ROWAN/NC

County and State

Name of multiple listing (if applicable)

Section number FIGURES

Page 4



Figure 4: Auditorium-Music Building Architectural Rendering, Hilyard Robert Robinson, 1962. (Livingstone College Archives & Special Collections).

United States Department of the Interior
National Park Service

National Register of Historic Places
Continuation Sheet

LIVINGSTONE COLLEGE HD AMENDMENT

Name of Property

ROWAN/NC

County and State

Name of multiple listing (if applicable)

Section number FIGURES Page 5

Figure 5: The Old Auditorium burned on December 5, 1958. It was sited approximately where the Aggrey Student Union was built. (*The Ell Cee*, 1927, p. 12 Livingstone College Archives & Special Collections via Digital NC).

United States Department of the Interior
National Park Service

National Register of Historic Places
Continuation Sheet

LIVINGSTONE COLLEGE HD AMENDMENT

Name of Property

ROWAN/NC

County and State

Name of multiple listing (if applicable)

Section number FIGURES Page 6

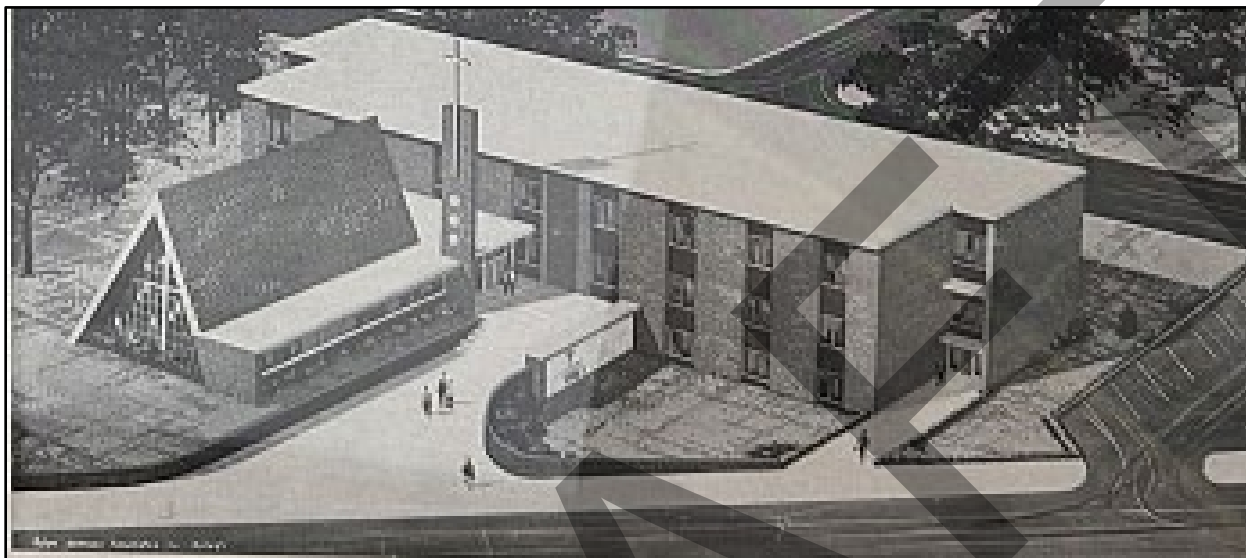


Figure 6: The Hood Seminary—architect's rendering, 1965 ("Centennial of Freedom Campaign Launched by African Methodist Episcopal Zion Church to Erect a Hood Seminary Building and A.M.E. Zion Publishing House," Livingstone College Archives and Special Collections.)

United States Department of the Interior
National Park Service

National Register of Historic Places
Continuation Sheet

LIVINGSTONE COLLEGE HD AMENDMENT

Name of Property

ROWAN/NC

County and State

Name of multiple listing (if applicable)

Section number FIGURES Page 7



Figure 7: Dodge Hall, 1942 before a 1945 renovation when the fourth floor and porch was removed (*The El Cee*, 1942, p. 12— Livingstone College Archives & Special Collections via Digital NC).

United States Department of the Interior
National Park Service

National Register of Historic Places
Continuation Sheet

LIVINGSTONE COLLEGE HD AMENDMENT

Name of Property

ROWAN/NC

County and State

Name of multiple listing (if applicable)

Section number FIGURES Page 8

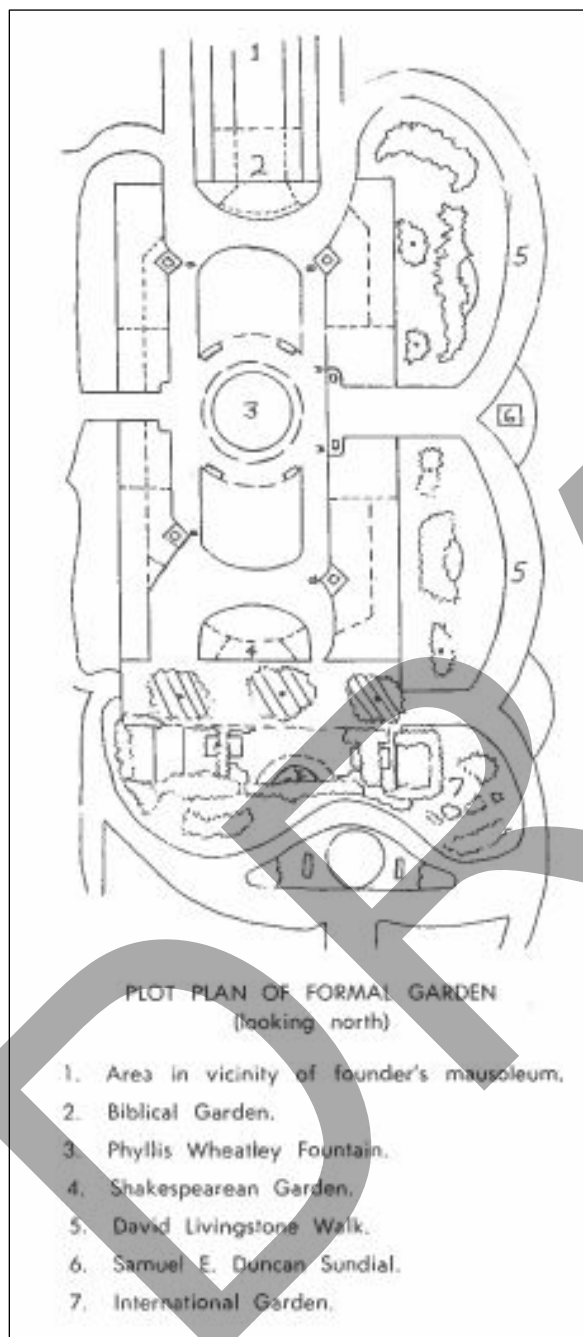


Figure 8: Plan for Poets' & Dreamers' Garden (Livingstone College Carnegie Library. *Poets' & Dreamers' Garden* brochure, 1967.)

United States Department of the Interior
National Park Service

National Register of Historic Places
Continuation Sheet

LIVINGSTONE COLLEGE HD AMENDMENT

Name of Property

ROWAN/NC

County and State

Name of multiple listing (if applicable)

Section number FIGURES Page 9

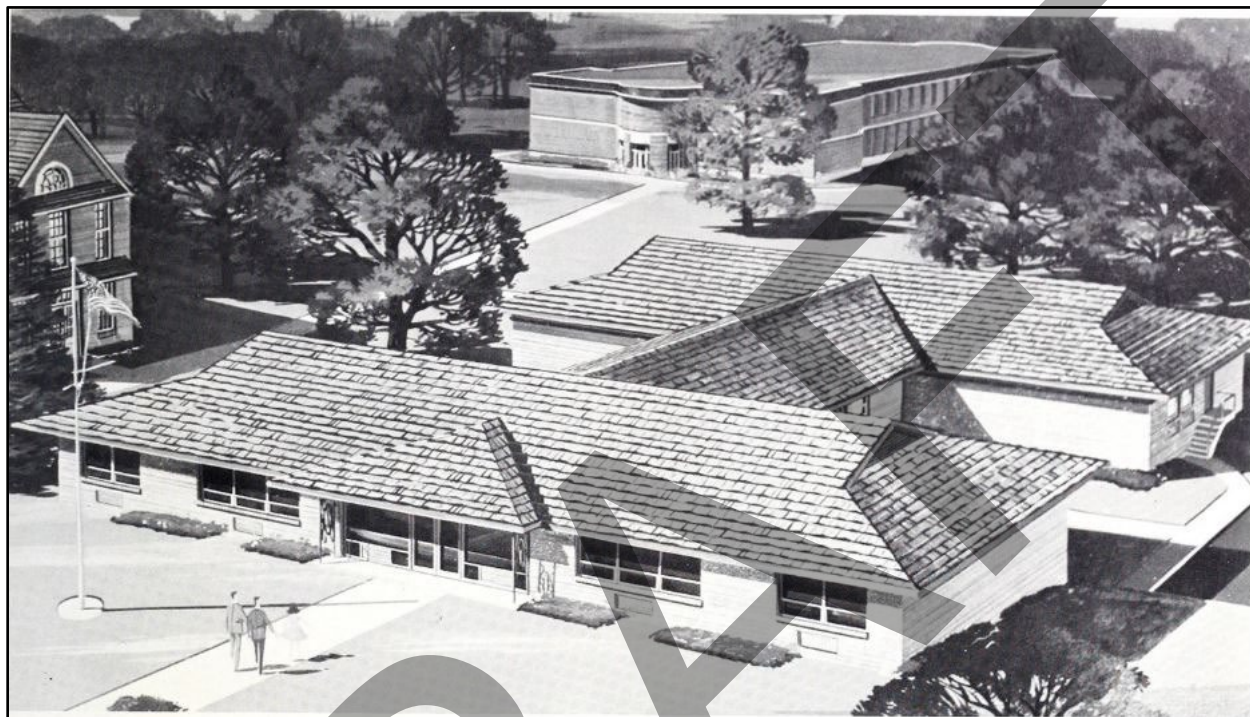


Figure 9: Robinson Health Center, architect's rendering (Livingstone College Archives & Special Collections).

United States Department of the Interior
National Park Service

National Register of Historic Places
Continuation Sheet

LIVINGSTONE COLLEGE HD AMENDMENT

Name of Property

ROWAN/NC

County and State

Name of multiple listing (if applicable)

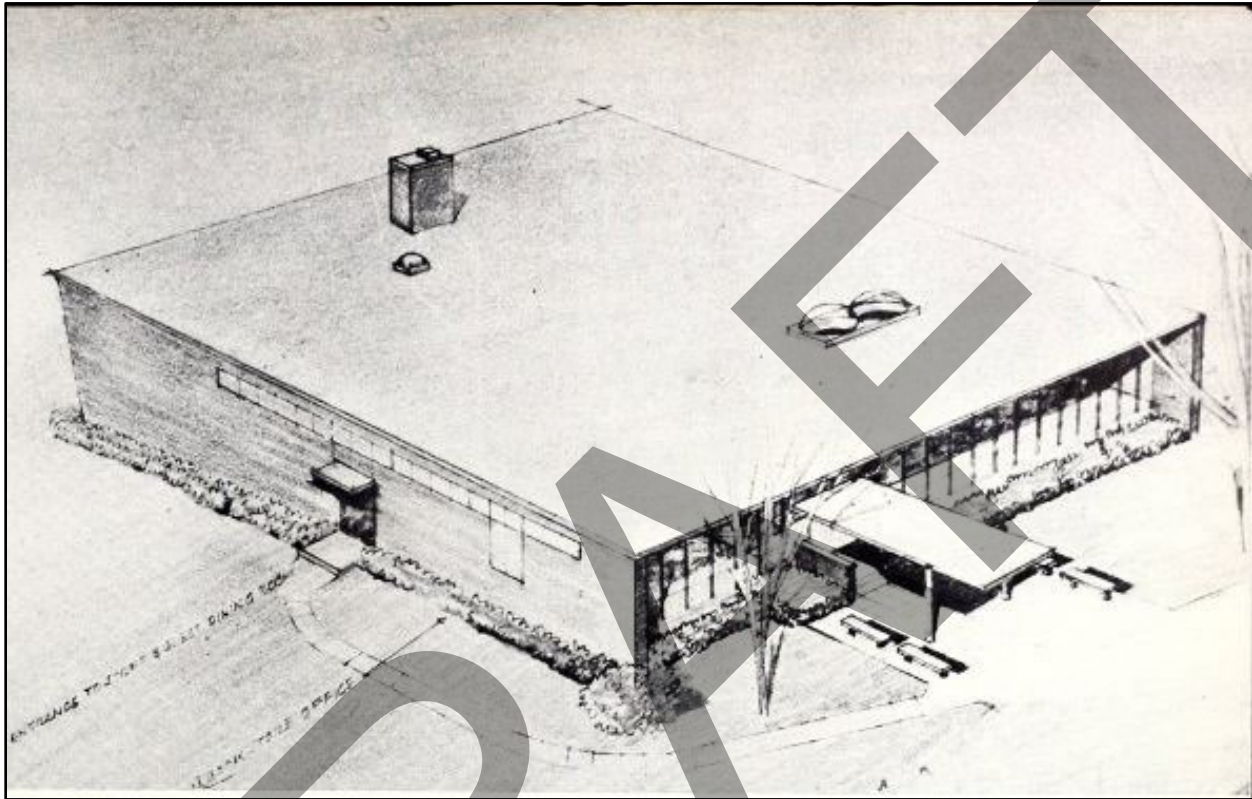
Section number FIGURES Page 10

Figure 10: Aggrey Student Union-Dining Rendering. Hilyard Robert Robinson. (*The Livingstonian* yearbook, 1962, p.71; Livingstone College Archives & Special Collections via Digital NC).

United States Department of the Interior
National Park Service

National Register of Historic Places
Continuation Sheet

LIVINGSTONE COLLEGE HD AMENDMENT

Name of Property

ROWAN/NC

County and State

Name of multiple listing (if applicable)

Section number FIGURES Page 11

Figure 11: Harris Hall (from *The Livingstonian* yearbook, 1959, p. 43, Livingstone College Archives & Special Collections via Digital NC).

United States Department of the Interior
National Park Service

National Register of Historic Places
Continuation Sheet

LIVINGSTONE COLLEGE HD AMENDMENT

Name of Property

ROWAN/NC

County and State

Name of multiple listing (if applicable)

Section number FIGURES Page 12

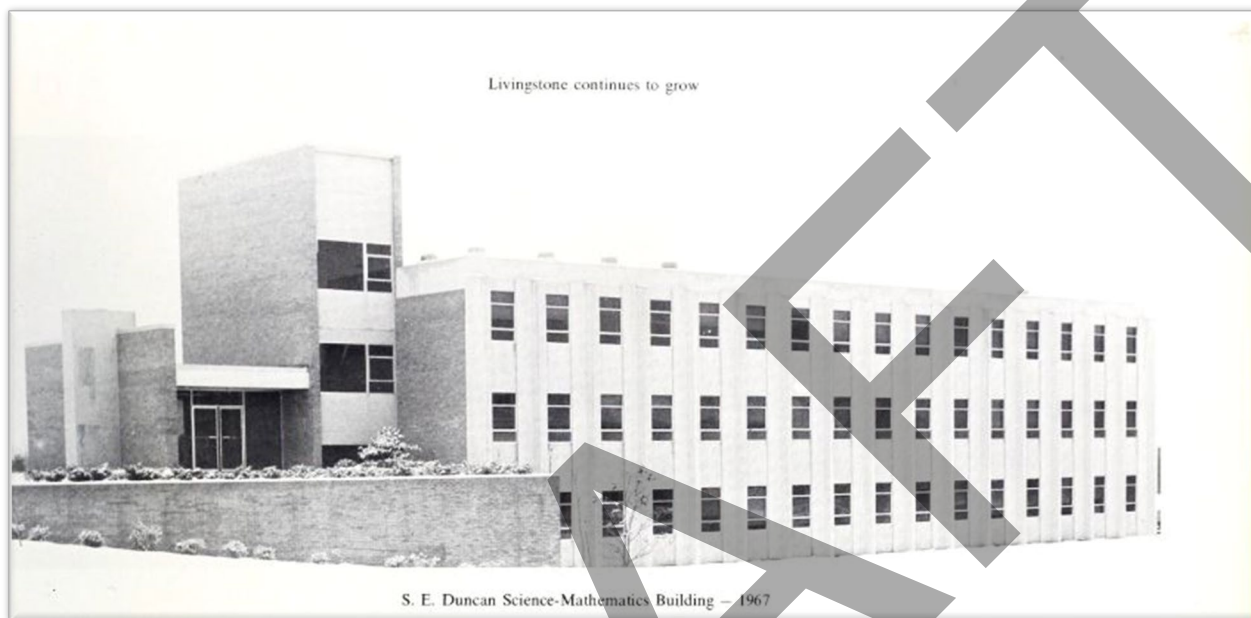


Figure 12: S.E. Duncan Science and Mathematics Building, northeast elevation (*The Livingstonian*, 1970; Livingstone College Archives & Special Collections via Digital NC).

United States Department of the Interior
National Park Service

National Register of Historic Places
Continuation Sheet

LIVINGSTONE COLLEGE HD AMENDMENT

Name of Property

ROWAN/NC

County and State

Name of multiple listing (if applicable)

Section number FIGURES Page 13

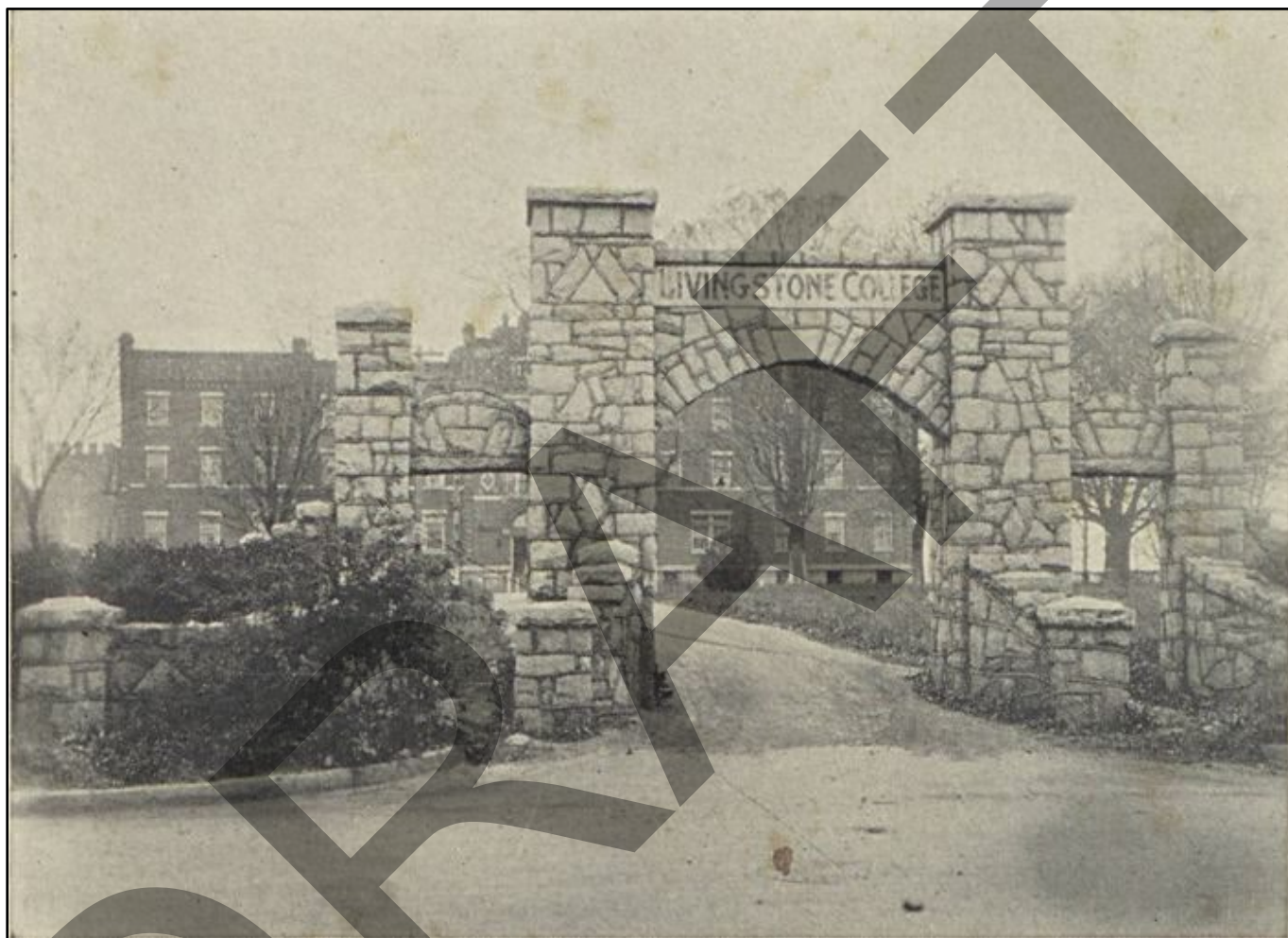


Figure 13: The old gateposts. (from *The El Cee*, 1927, p. 9--Yearbook before *The Livingstonian* was adopted--Livingstone College Archives & Special Collections via Digital NC).

United States Department of the Interior
National Park Service

National Register of Historic Places
Continuation Sheet

LIVINGSTONE COLLEGE HD AMENDMENT

Name of Property

ROWAN/NC

County and State

Name of multiple listing (if applicable)

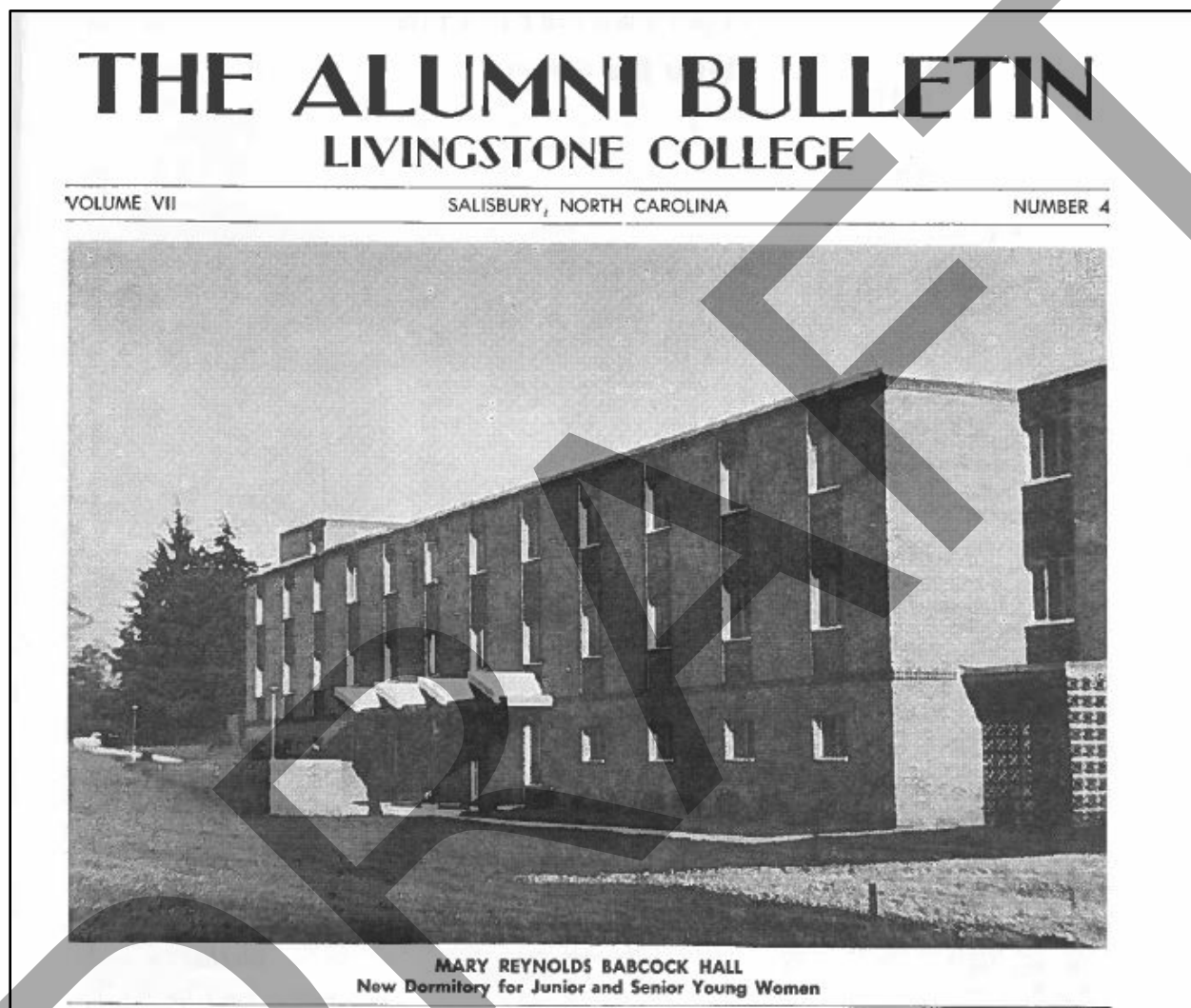
Section number FIGURES Page 14

Figure 14: Mary Reynolds Babcock Hall (*The Alumni Bulletin*, Vol. VII, No. 4; Livingstone College Archives & Special Collections).

United States Department of the Interior
National Park Service

National Register of Historic Places
Continuation Sheet

LIVINGSTONE COLLEGE HD AMENDMENT

Name of Property

ROWAN/NC

County and State

Name of multiple listing (if applicable)

Section number FIGURES Page 15

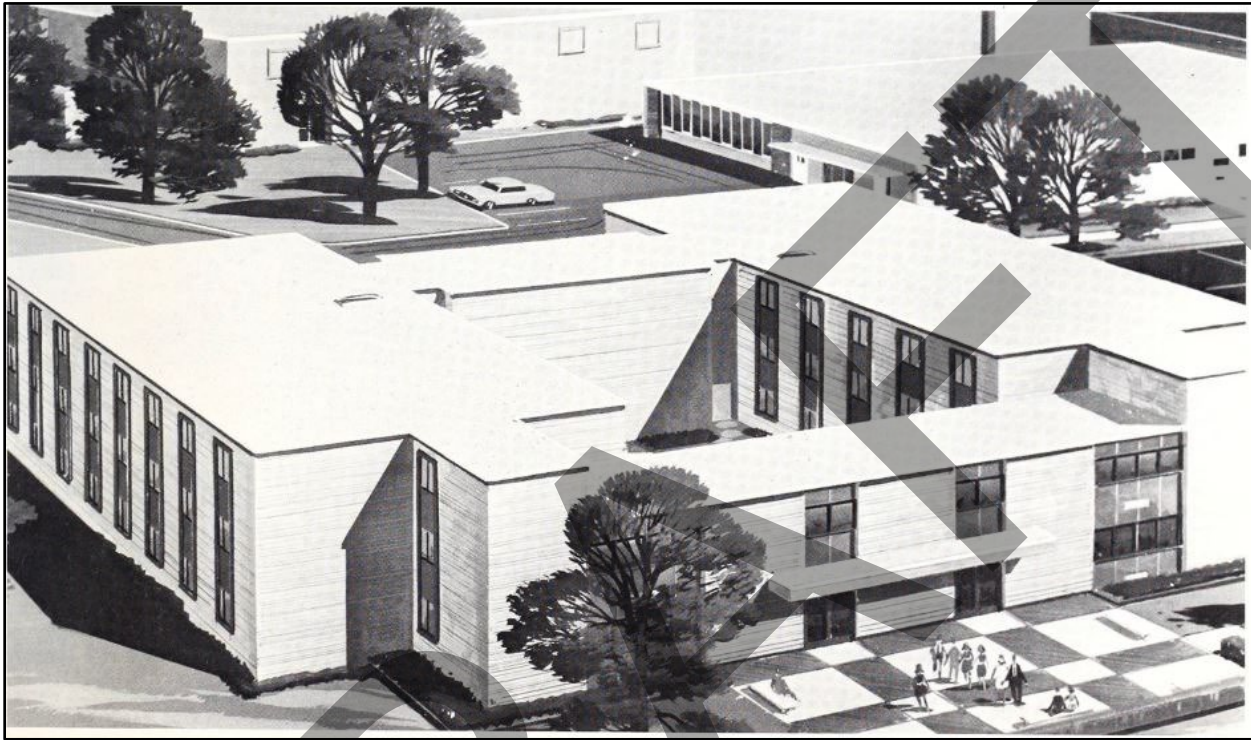


Figure 15: "Future Dormitory for Men." This is obviously Annie Vance Tucker Hall since Aggrey Student Union is in the background, but Dancy Hall—the men's dormitory constructed in 1972—was built to the same plans (from *The Livingstonian*, 1971, p. 29; Livingstone College Archives & Special Collections via Digital NC).

United States Department of the Interior
National Park Service

National Register of Historic Places
Continuation Sheet

LIVINGSTONE COLLEGE HD AMENDMENT

Name of Property

ROWAN/NC

County and State

Name of multiple listing (if applicable)

Section number FIGURES Page 16

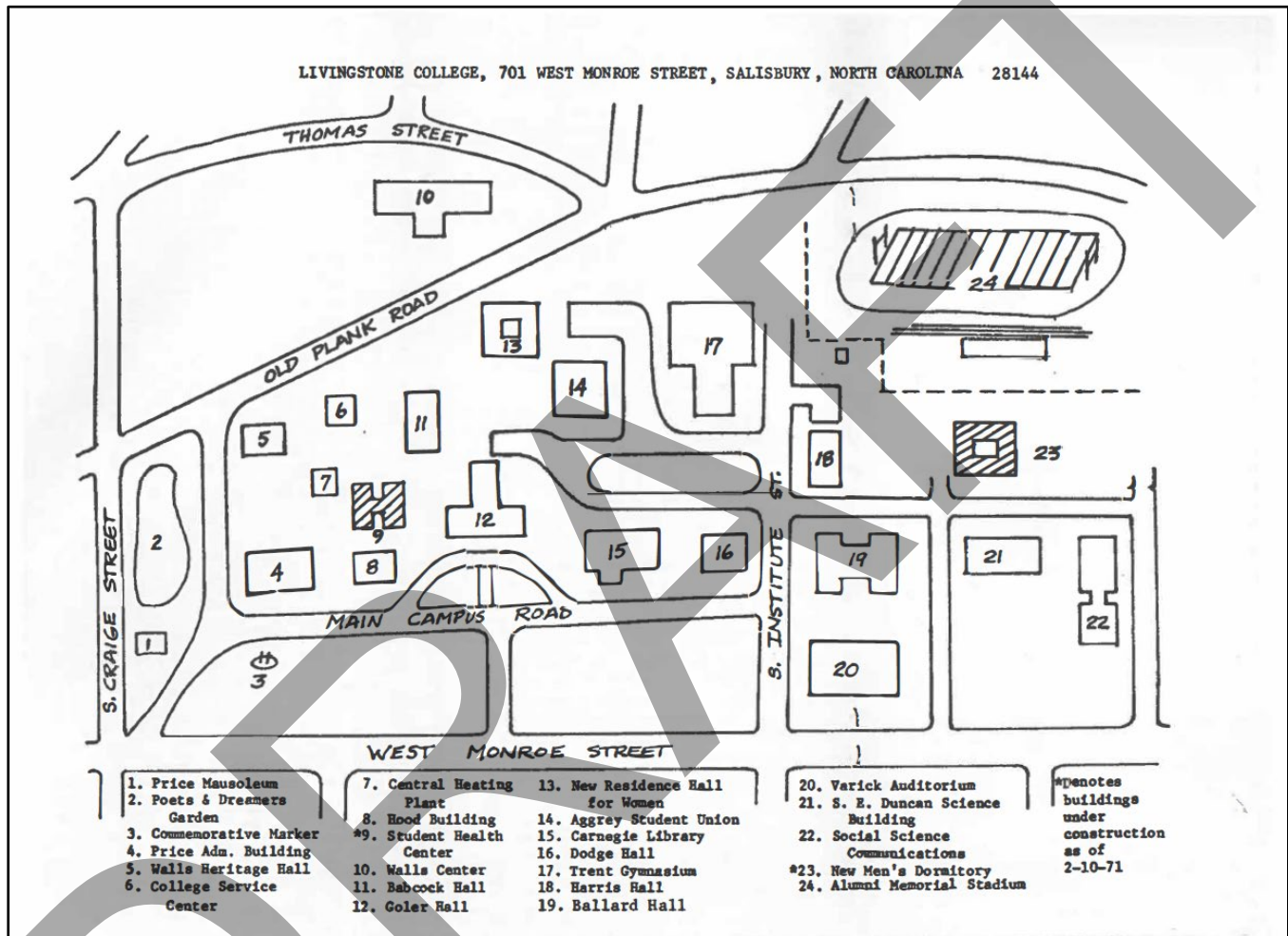


Figure 16: Livingstone College Campus Map, 1971 demonstrates the incredible growth that occurred under President Duncan and the fulfillment of the Ten-Year-Plan. (Courtesy of Livingstone College Archives & Special Collections).