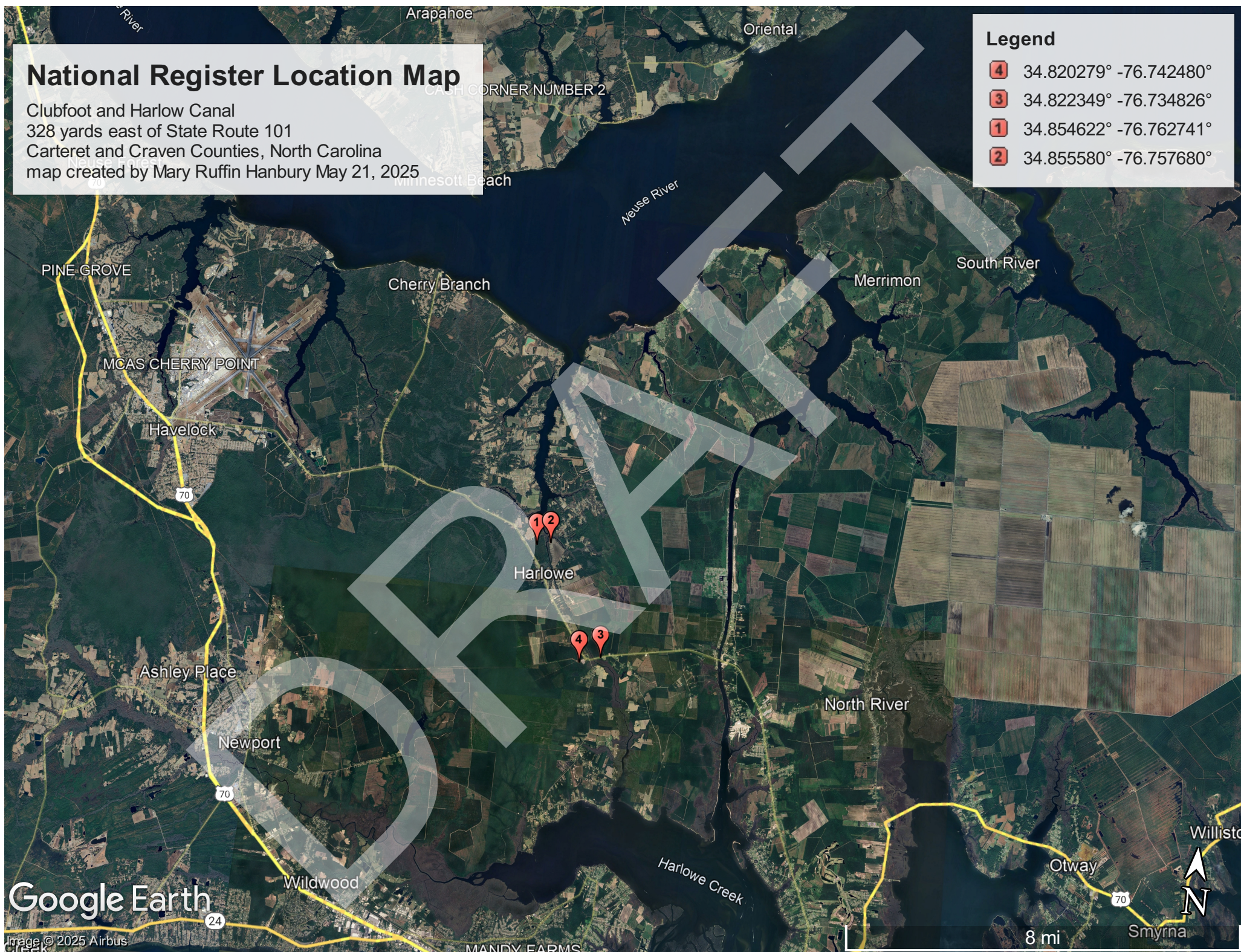


National Register Location Map

Clubfoot and Harlow Canal
328 yards east of State Route 101
Carteret and Craven Counties, North Carolina
map created by Mary Ruffin Hanbury May 21, 2025

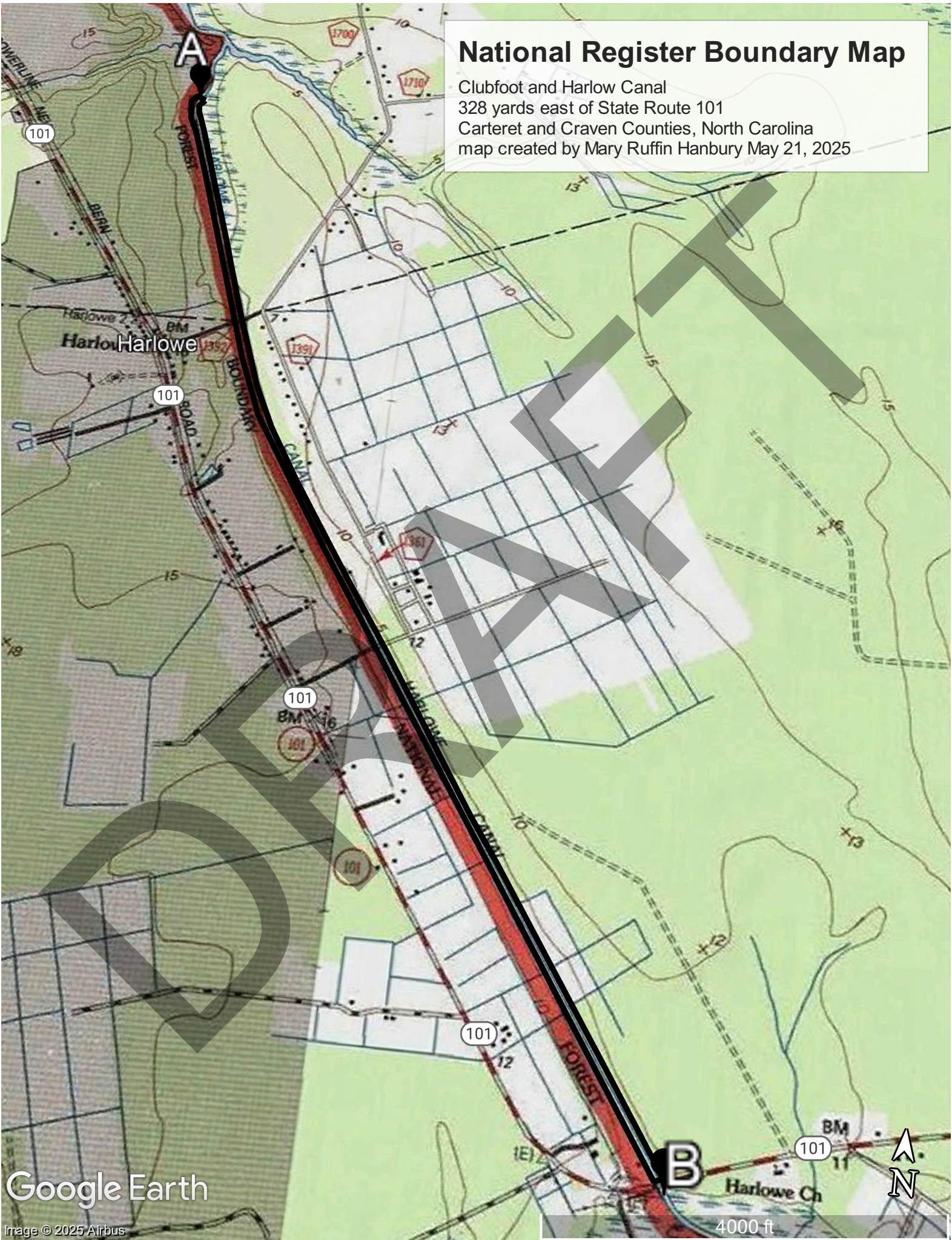
Legend

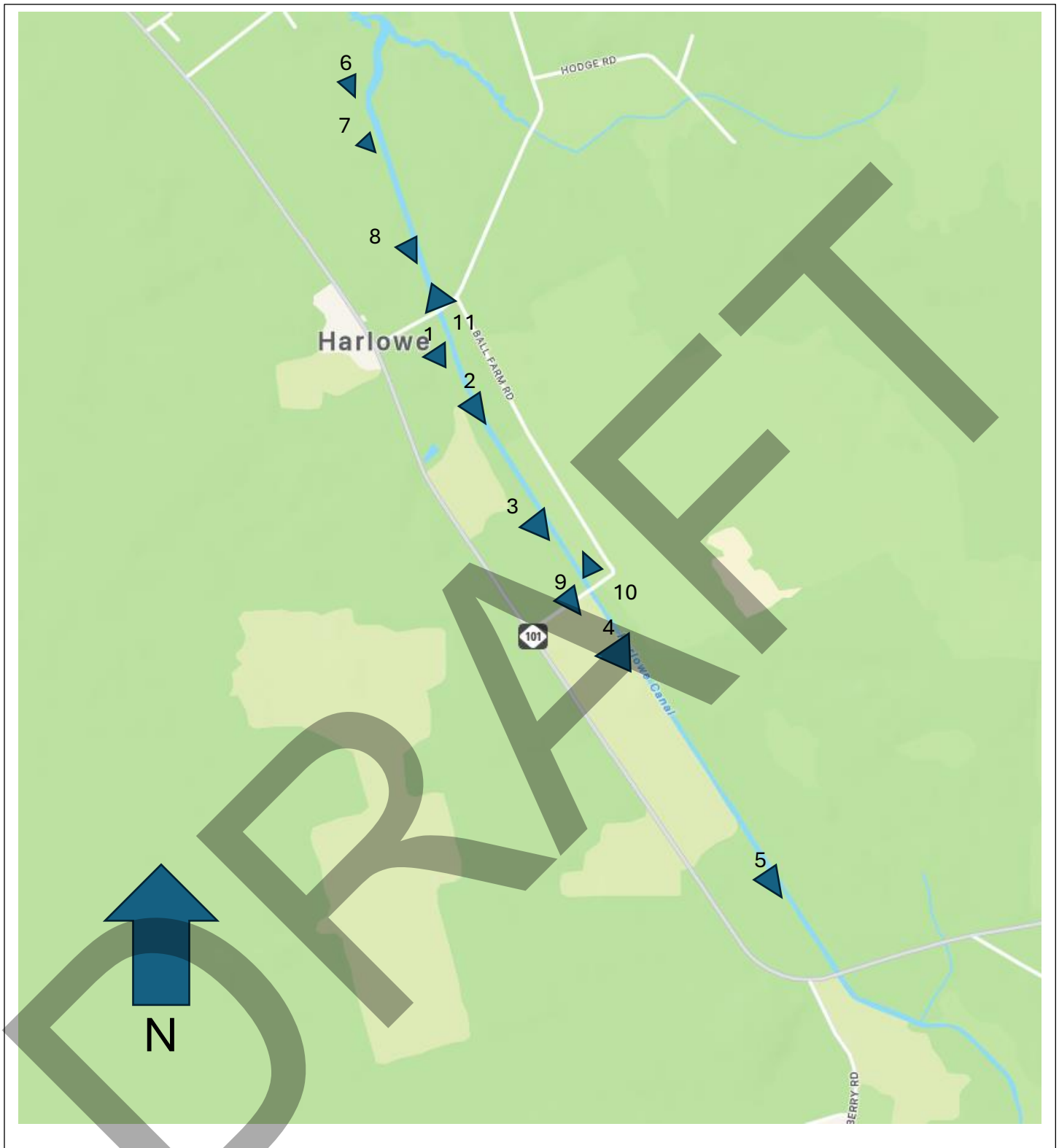
- 4 34.820279° -76.742480°
- 3 34.822349° -76.734826°
- 1 34.854622° -76.762741°
- 2 34.855580° -76.757680°



National Register Boundary Map

Clubfoot and Harlow Canal
328 yards east of State Route 101
Carteret and Craven Counties, North Carolina
map created by Mary Ruffin Hanbury May 21, 2025





CLUBFOOT & HARLOW CANAL PHOTO KEY

A CR0565 May 2024 # 1
 B CR0565 May 2024 # 2
 C CR0565 May 2024 # 3
 D CR0565 May 2024 # 4
 F CV1338 May 2024 # 1
 G CV1338 May 2024 # 2

H CV1338 May 2024 # 3
 I CR0565 Feb 2025 # 1
 J CR0565 Feb 2025 # 2
 K CR0565 Feb 2025 # 3E CR0565 May 2024 # 5

source: Google Maps, map created by Mary Ruffin
 Hanbury 5.12.25