

Harrington's School

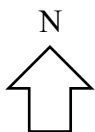
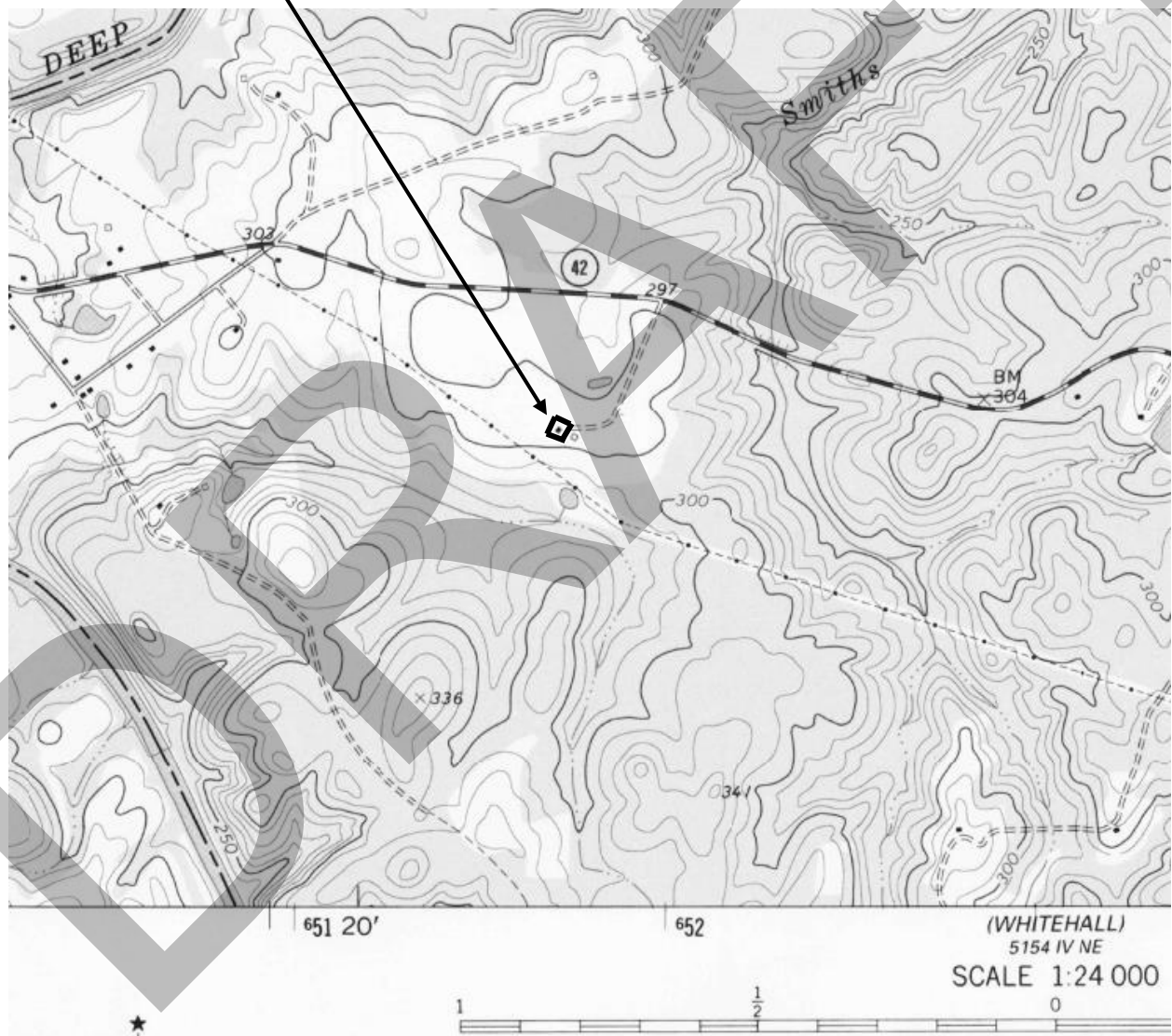
6383 Carbonton Road, Lee County, NC

National Register of Historic Places Location Map

1. Latitude: 35.511729 Longitude: -79.326957

Map based on Goldston, NC, USGS quad. Map created by J. Daniel Pezzoni, August 2025.

Location of resource



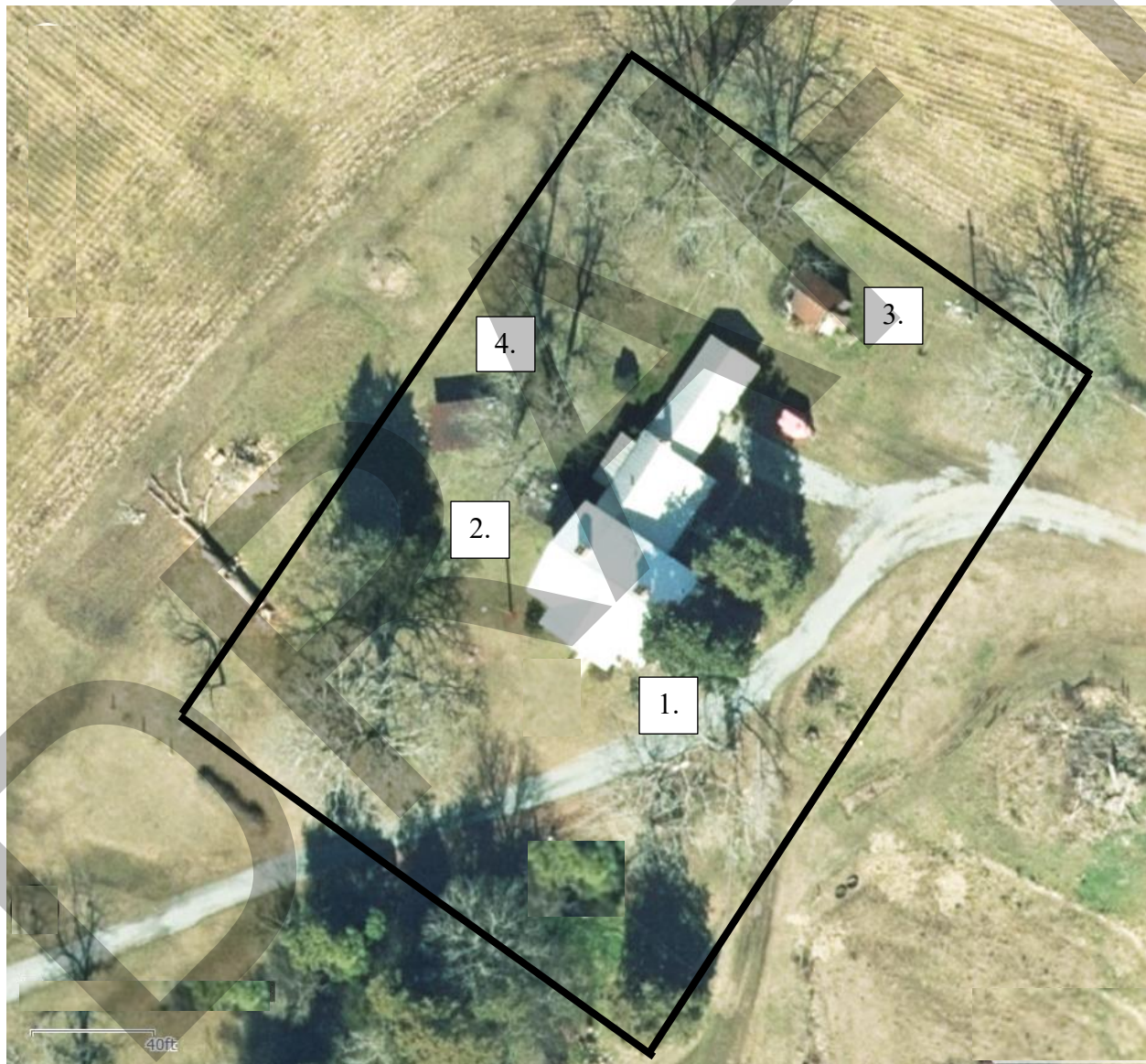
Harrington's School

6383 Carbonton Road, Lee County, NC

National Register of Historic Places Boundary/Sketch Map

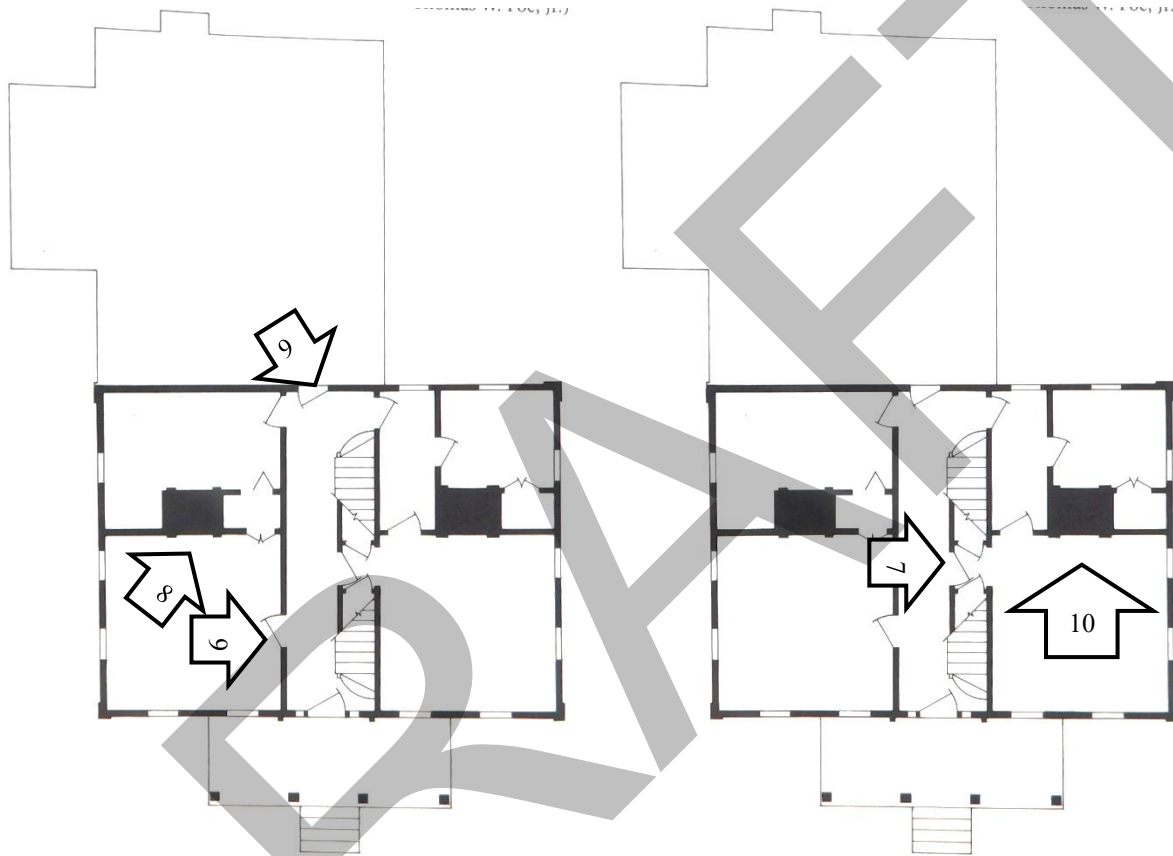
Map based on HPOWEB ESRI aerial imagery created by J. Daniel Pezzoni, January 2026. The black line indicates the National Register boundary. The washhouse is gone but the chimney at its southeast end survives. No-longer-extant kennel and handicap ramp digitally masked.

- Inventory:
1. Harrington's School. Contributing building.
 2. Cellar. Contributing building.
 3. Washhouse chimney. Non-contributing structure.



Harrington's School 6383 Carbonton Road, Lee County, NC

Interior Photo Keys adapted from Pezzoni, *History and Architecture of Lee County*, p. 193. The second-floor floor plan is similar to the first-floor floor plan. Photo numbers keyed to the Photo Log in the nomination report.



First floor

Second floor