

Gulf Oil Distribution Facility National Register of Historic Places Location Map



Downtown
Marshall

3/26/2026, 9:37:57 AM
481 Rollins Road
Marshall, NC
Madison County

Created by: Subil H. Arginbar 3/26/26
Source: HPO Web
North
— Boundary

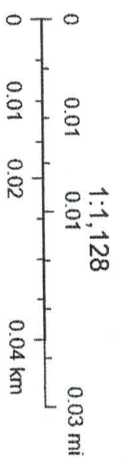
1:9,028
0 0.05 0.1 0.2 0.2 mi 0.4 km

Gulf Oil Distribution Facility National Register of Historic Places Boundary Map

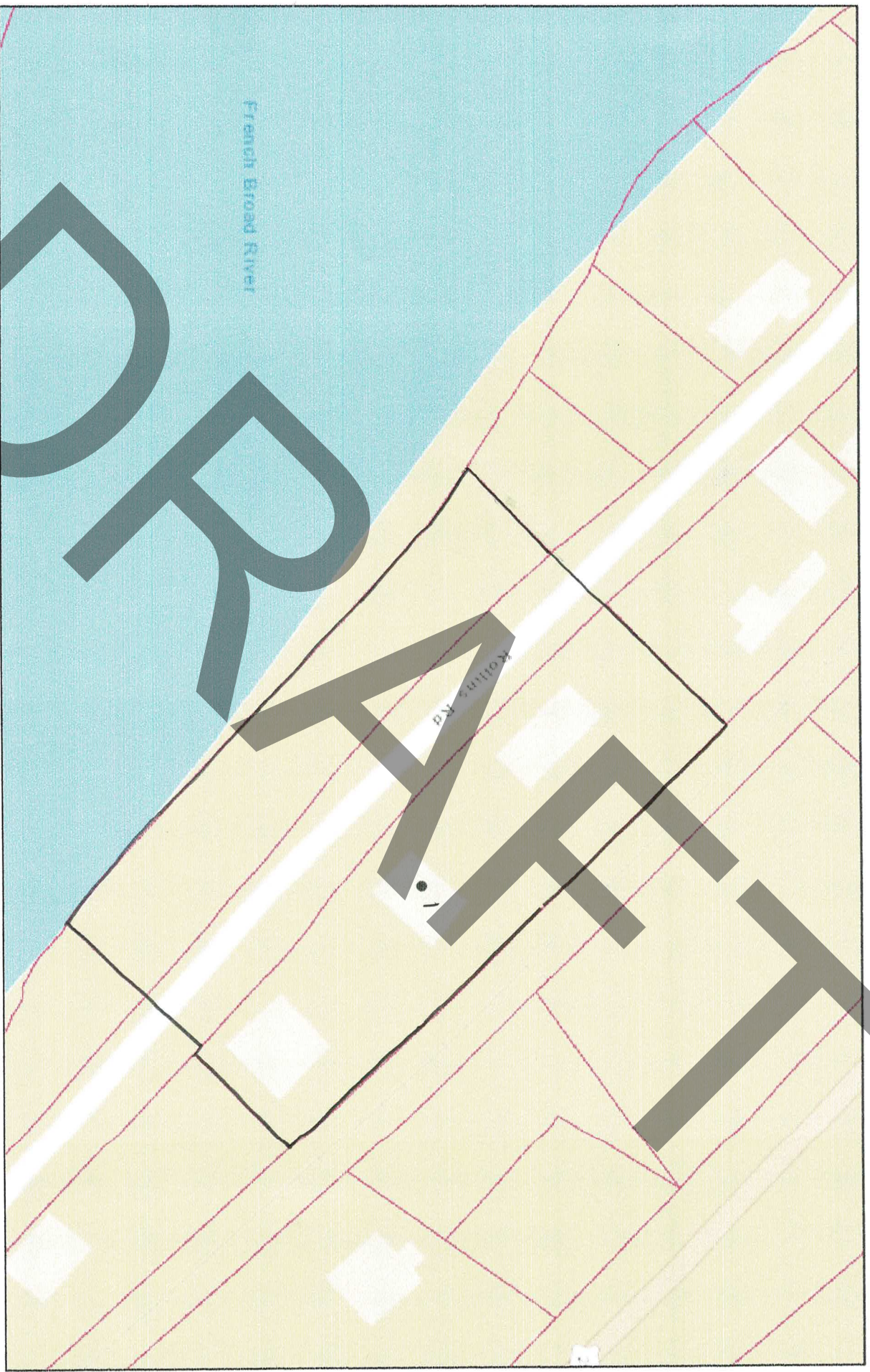


3/26/2026, 9:41:36 AM
481 Rollins Road
Marshall, NC
Madison County

Created by: Sybil H. Argintar 3/26/26
Source: HPD Web
North | — Boundary



Gulf Oil Distribution Facility National Register of Historic Places Coordinates Map



4/8/2026, 10:13:22 AM

481 Bollins Road

Marshall, NC

Madison County

35.7889149, -82.663778

North

Boundary

created by: Sybil H. Argintar 4/8/26 source: HPD USB

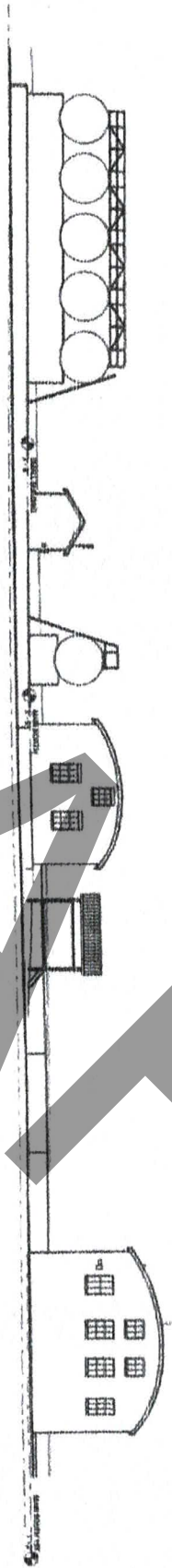
Buncombe County, NC, State of North Carolina DOT, Esri, HERE, Garmin, INCREMENT P, NGA, USGS | NCCGIA, NCDOT, NC Geographic Survey, USGS, NPS, US ACE (Wilmington), US DOI, NRCS | USGS, NCCGIA | NCCGIA, NC 911 Board | NC Center for

NOT FOR CONSTRUCTION

SITE ELEVATION

National Register of Historic Places
Gulf Oil Distribution Facility
481 Rollins Road Marshall, NC
Madison County

SITE ELEVATION EXISTING

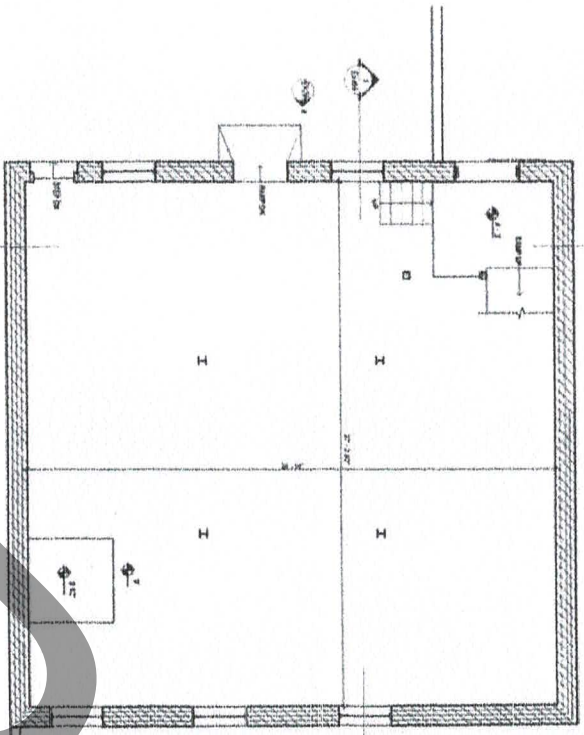


<p>DATE EX200</p>	<p>NOT FOR CONSTRUCTION</p>	<p>REVISIONS</p>	<p>DRAWING TITLE EXISTING SITE ELEVATION</p>	<p>EVERY ANGLE, INC. 801 ROLLINS RD MARSHALL, NC 28753 EVERY ANGLE, INC.</p>	<p>SUPERUNISON DRAWING NUMBER: 0000000001 1000-00-1000</p>
-----------------------	-----------------------------	------------------	--	--	---

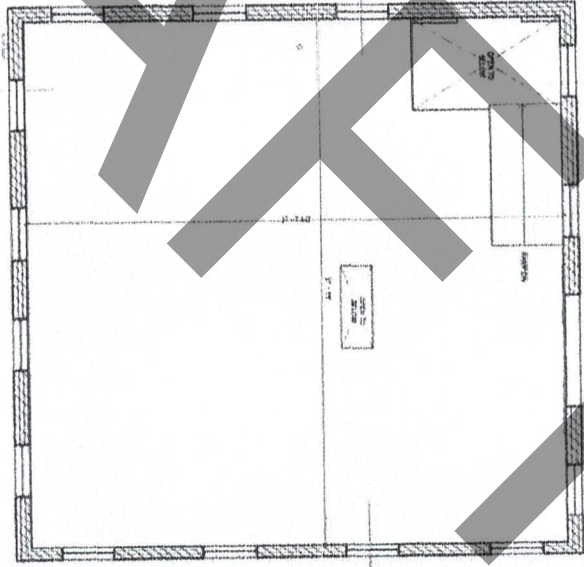
National Register of Historic Places
 Gulf Oil Distribution Facility
 481 Rollins Road Marshall, NC
 Madison County

WAREHOUSE

FIRST FLOOR PLAN EXISTING



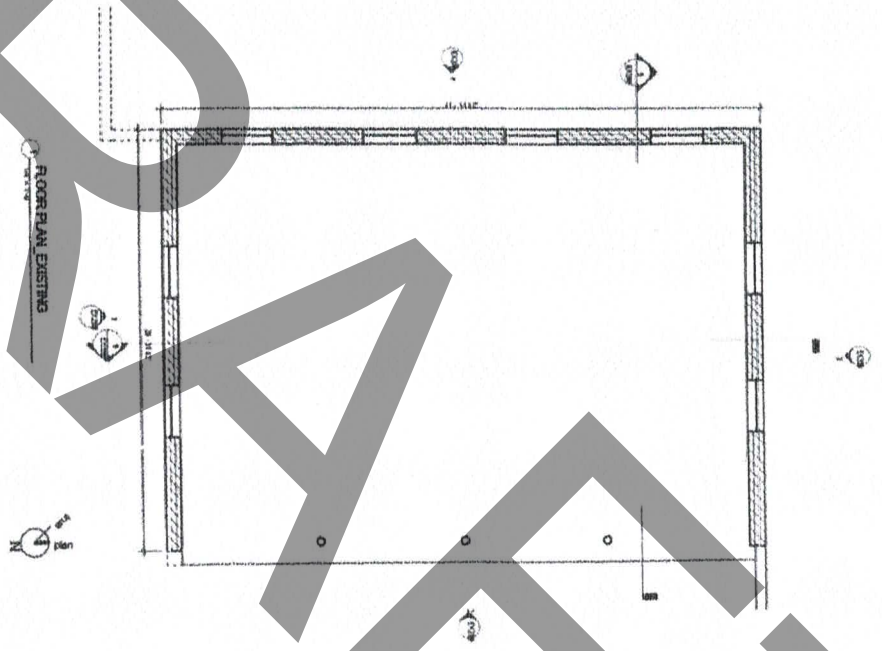
SECOND FLOOR PLAN EXISTING



SHEET EX100	NOT FOR CONSTRUCTION	REVISIONS NO. DATE BY	DRAWING TITLE EXISTING FLOOR PLANS	EMORY ANGLE INC. 481 ROLLINS RD MARSHALL, NC 28753 MAIN BUILDING - SOUTH	SUPERUNISON (704) 885-1800 / 885-24-709 WWW.SUPERUNISON.COM
-----------------------	-------------------------	--------------------------	--	--	--

National Register of Historic Places
Crude Oil Distribution Facility
481 Rollins Road
Marshall, NC
Madison County

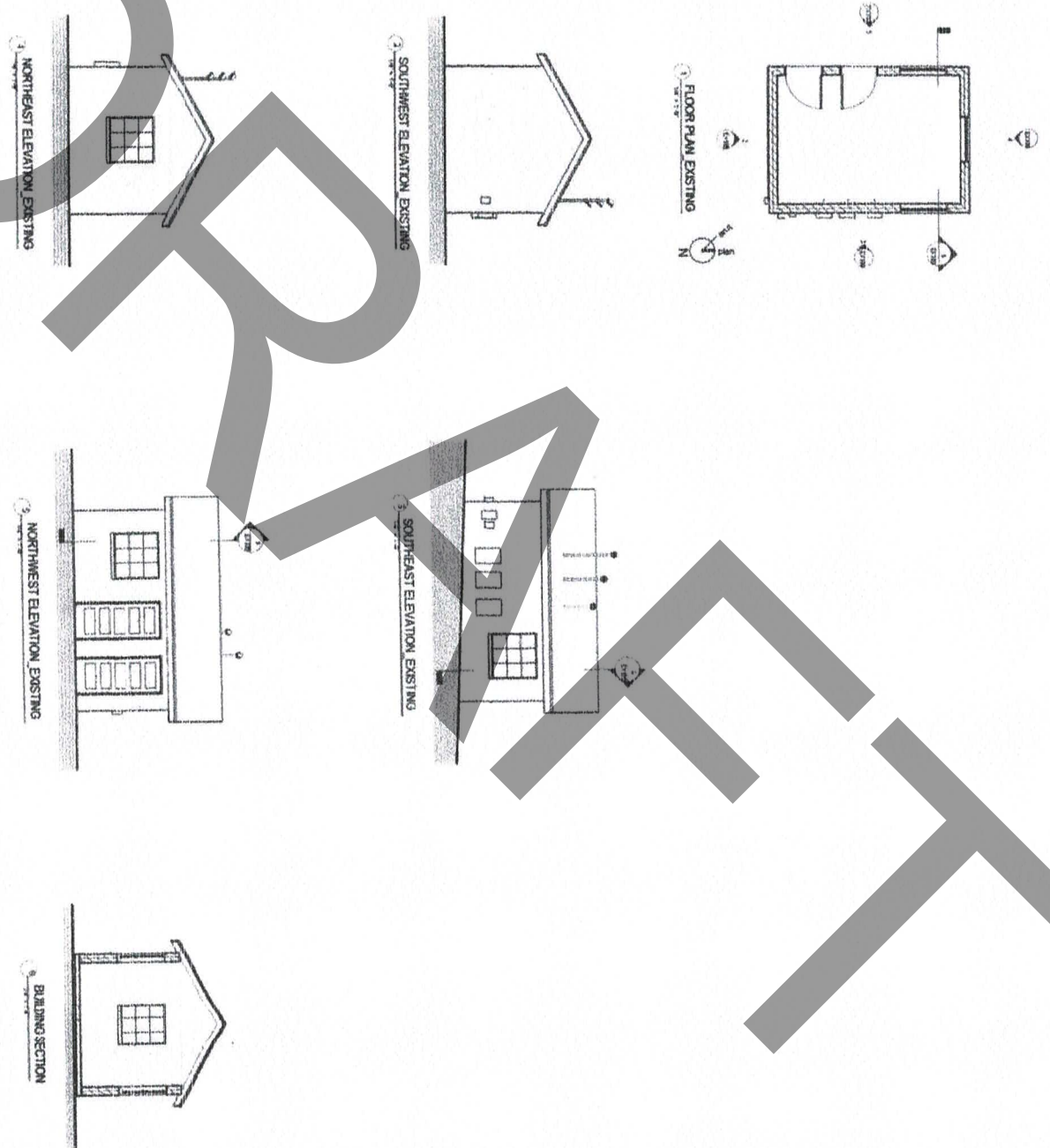
GARAGE



SHEET EX100	NOT FOR CONSTRUCTION	REVISIONS	DRAWING TITLE EXISTING FLOOR PLAN	EVERY ANGLE INC. 481 ROLLINS RD. MARSHALL, NC 28753 MAIN BUILDING - NORTH	SUPERUNISON 3000 ROLLINS RD. LINCOLN, NC 27524-7320 PHOTOGRAPHY: LINCOLN.COM 336-744-7320 PRINTING: PAPER LINKS.COM 336-744-4000
----------------	-------------------------	-----------	--------------------------------------	--	---

National Register of Historic Places
 Gulf Oil Distribution Facility
 481 Rollins Road Marshall, W
 Madison County

Pump House

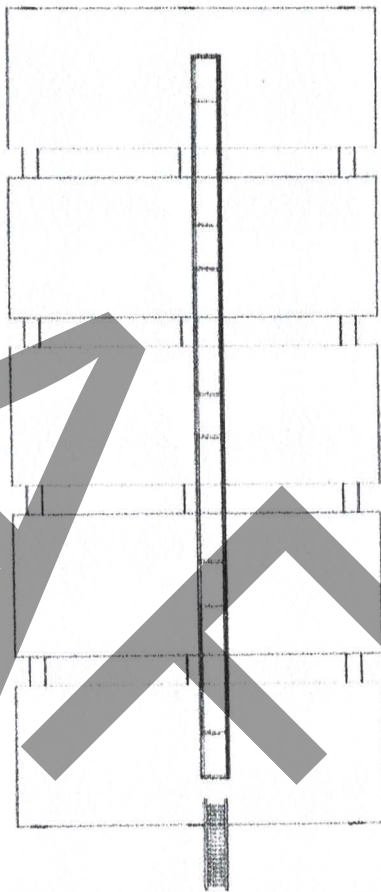


SHEET EX100	NOT FOR CONSTRUCTION	REVISIONS NO. DATE BY	DRAWING TITLE EXISTING FLOOR PLAN, ELEVATIONS, & SECTION	EVERY ANGLE INC. 481 ROLLINS RD MARSHALL, NC 28753 SMALL BUILDING	SUPERUNISON 25 HANCOCK BLVD - LINCOLN, NC 28504 704-334-7129 704-334-7129
-----------------------	-------------------------	--------------------------	---	---	---

National Register of Historic Places
Gulf Oil Distribution Facility
481 Rollins Road Marshall, NC
Madison County

Tank Structure/Tanks

FLOOR PLAN EXISTING



North

DATE EX100	NOT FOR CONSTRUCTION	REVISIONS	DRAWING TITLE	ORGANIZATION/OWNER	SUPERUNION 200 HEBNER LARSON COM / 400-214-7100 200 HEBNER LARSON COM / 400-214-7100
			EXISTING FLOOR PLAN	481 ROLLINS RD MARSHALL, NC 28753 LARGE TANK ASSEMBLY	

Gulf Oil Distribution Facility National Register of Historic Places Site Plan Map



3/26/2026, 10:03:57 AM

491 Rollins Road

Marshall, NC

Madison county

Created by: Subil H. Arqitar

North

Boundary

French Broad River

Rollins Road

Warehouse C Building

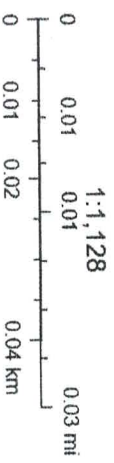
Filling station structure
Contributing structure

Garage contributing Building

Pump House Building
Contributing Building

Oil Tank Structure
Contributing Structure

Oil Tank structure
Non-contributing Structure



North Carolina State Historic Preservation Office
NCCGIA, NC 911 Board, Buncombe County, NC, State of North Carolina
DOT, Esri, HERE, Garmin, INCREMENT P, NGA, USGS, NC Center for
North Carolina State Historic Preservation Office

Gulf Oil Distribution Facility National Register of Historic Places Photo Key



3/26/2026, 10:34:48 AM

481 Rollins Road

Marshall, NC

Madison County

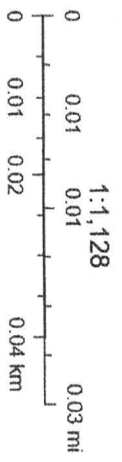
Photo Key (Photo / Direction of View)

North

Boundary

Created by: Subil H Aramintar 3/26/26

Source: HPD Web



North Carolina State Historic Preservation Office
 NCCGIA, NC 911 Board, Buncombe County, NC, State of North Carolina
 DOT, Esri, HERE, Garmin, INCREMENT P, NGA, USGS, NC Center for
 North Carolina State Historic Preservation Office
 NCCGIA, NC 911 Board | USGS, NCCGIA | NCCGIA, NC 911 Board | NC Center for