

NCHPO HPOWER



Dunbar High School
Lat: 35.802231
Long: -80.262529

6/6/2025, 1:54:19 PM

Dunbar High School
301 Smith Avenue
Lexington, Davidson County
North Carolina
National Register Location Map

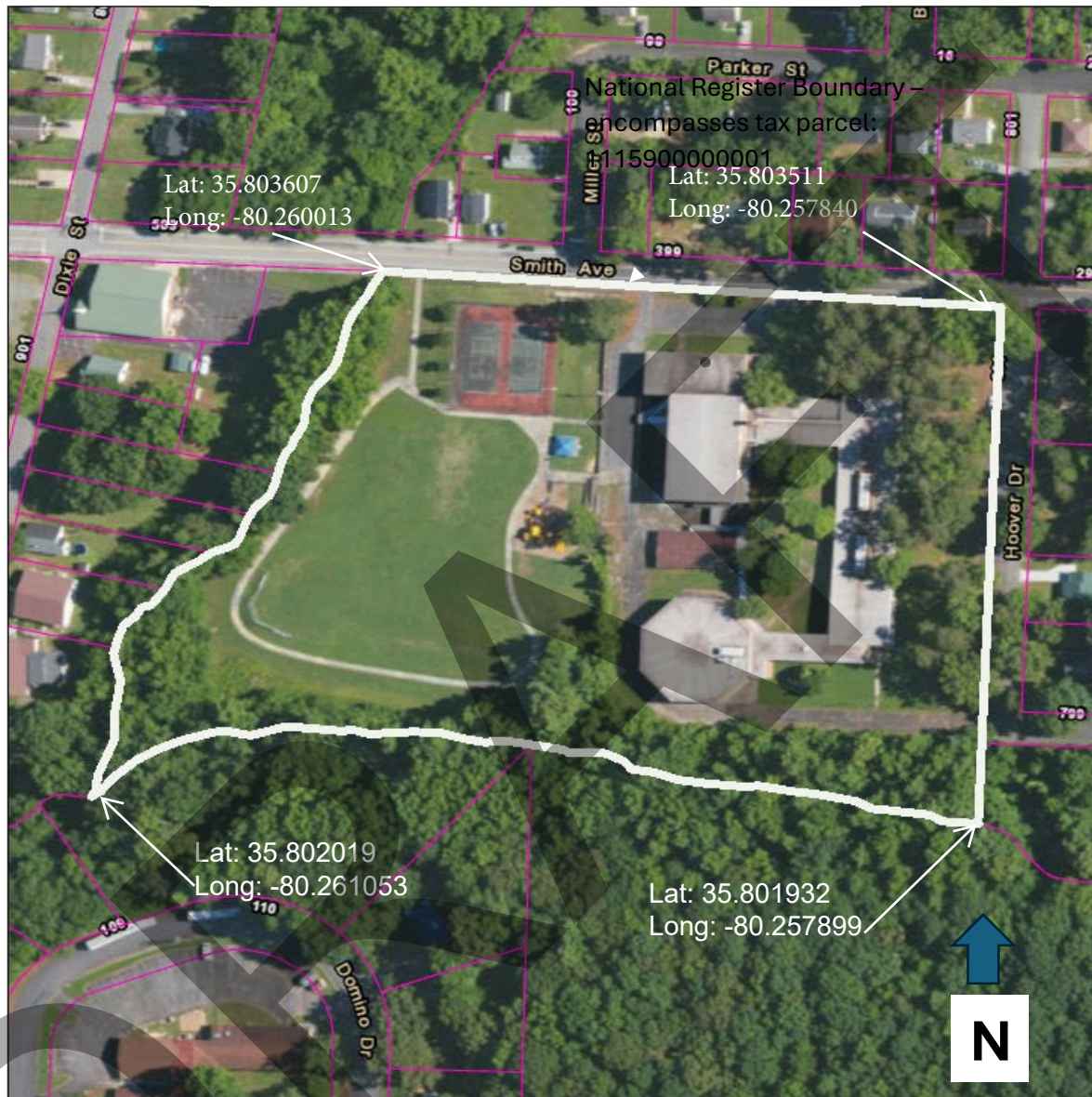
Source: NC HPO, HPOWER
Created by Tessia Robison
5-14-2025



1:18,056
0 0.15 0.3 0.6 mi
0 0.25 0.5 1 km
Copyright: © 2013 National Geographic Society, i-cubed

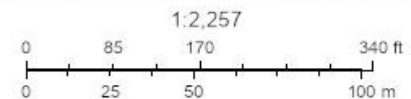
North Carolina State Historic Preservation Office
Copyright: © 2013 National Geographic Society, i-cubed |

National Register Coordinates Map



Dunbar High School
301 Smith Avenue
Lexington, Davidson County
North Carolina
**National Register Coordinates
Map**

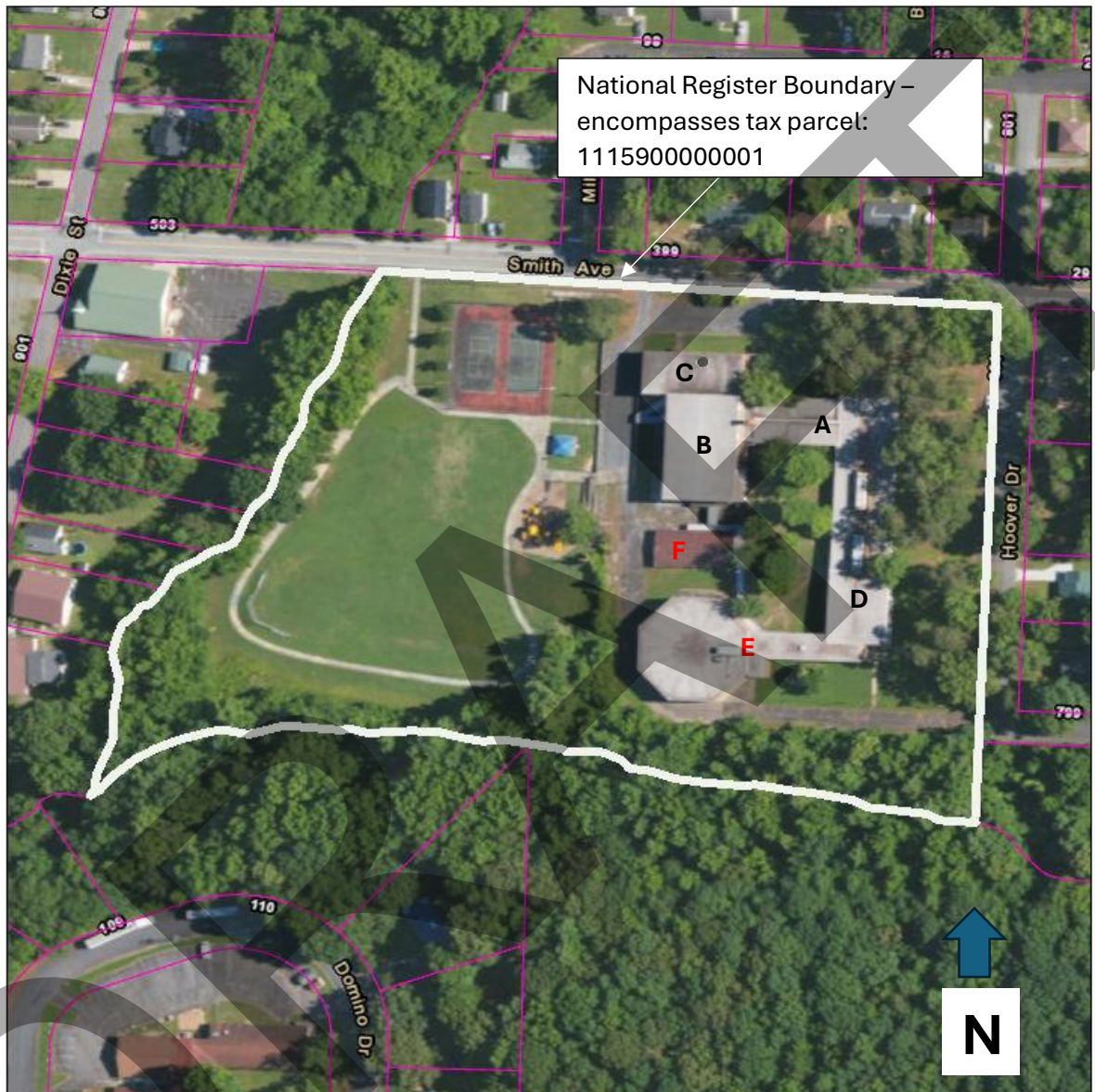
Source: NC HPO, HPOWEB
Created by Tessia Robison
5-14-2025



Esri, HERE, Garmin, (c) OpenStreetMap contributors, Source: Esri, USDA
FSA, NC Center for Geographic Information and Analysis (NCCGIA), NC
County Governments, US EPA

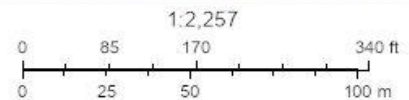
North Carolina State Historic Preservation Office
NRCS | NCCGIA, NC 911 Board | NC Center for Geographic Information and Analysis (NCCGIA), NC County

National Register Boundary Map



Dunbar High School
301 Smith Avenue
Lexington, Davidson County
North Carolina
National Register Boundary Map

Source: NC HPO, HPOWEB
Created by Tessia Robison
5-14-2025



- A. Original School Building (1951-52).
- B. Gymnasium (1951-52).
- C. Auditorium (1957).
- D. Classroom Addition (1962).
- E. Media Center/ Corridor (1973).
- F. Modular Classroom (constructed by 1983).

• Past the period of significance.

G. Lat: 35.802886 Long: -80.260464

9-17-2025

National Register Coordinates Map

A number line with two scales. The top scale is labeled in feet (ft) with major tick marks at 0, 85, 170, and 340. The bottom scale is labeled in meters (m) with major tick marks at 0, 25, 50, and 100. There are 10 small tick marks between each major tick mark on both scales, representing increments of 10 feet and 5 meters respectively. The scales are aligned such that 0 ft corresponds to 0 m, 85 ft to 25 m, 170 ft to 50 m, and 340 ft to 100 m.

1. HERE, Garmin, (c) OpenStreetMap contributors, NC CGIA, Maxar, prosoft, NC Center for Geographic Information and Analysis (NCCGIA), NC county Governments, US EPA

North Carolina State Historic Preservation Office
Center for Geographic Information and Analysis (NCCGIA), NC County

