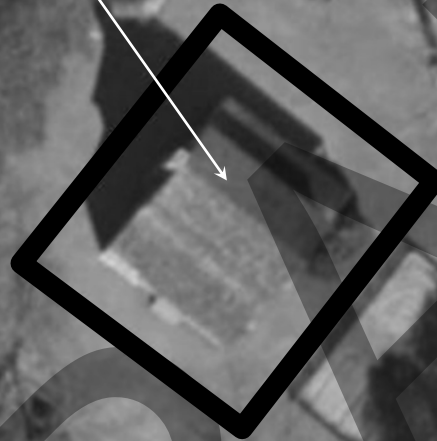


Adam Dough Etheridge House



National Register Boundary
(10' from building perimeter)



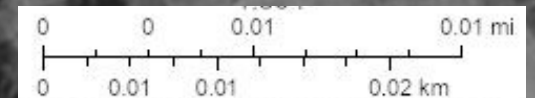
NATIONAL REGISTER OF HISTORIC PLACES

Adam Dough Etheridge House

1140 U.S. Highway 64

Manteo vicinity

Dare County, North Carolina



NATIONAL REGISTER BOUNDARY MAP

Created by Annie McDonald, Richard Grubb & Associates, December 2024

Basemap: HPOWeb



NATIONAL REGISTER OF HISTORIC PLACES

Adam Dough Etheridge House

1140 U.S. Highway 64

Manteo vicinity

Dare County, North Carolina

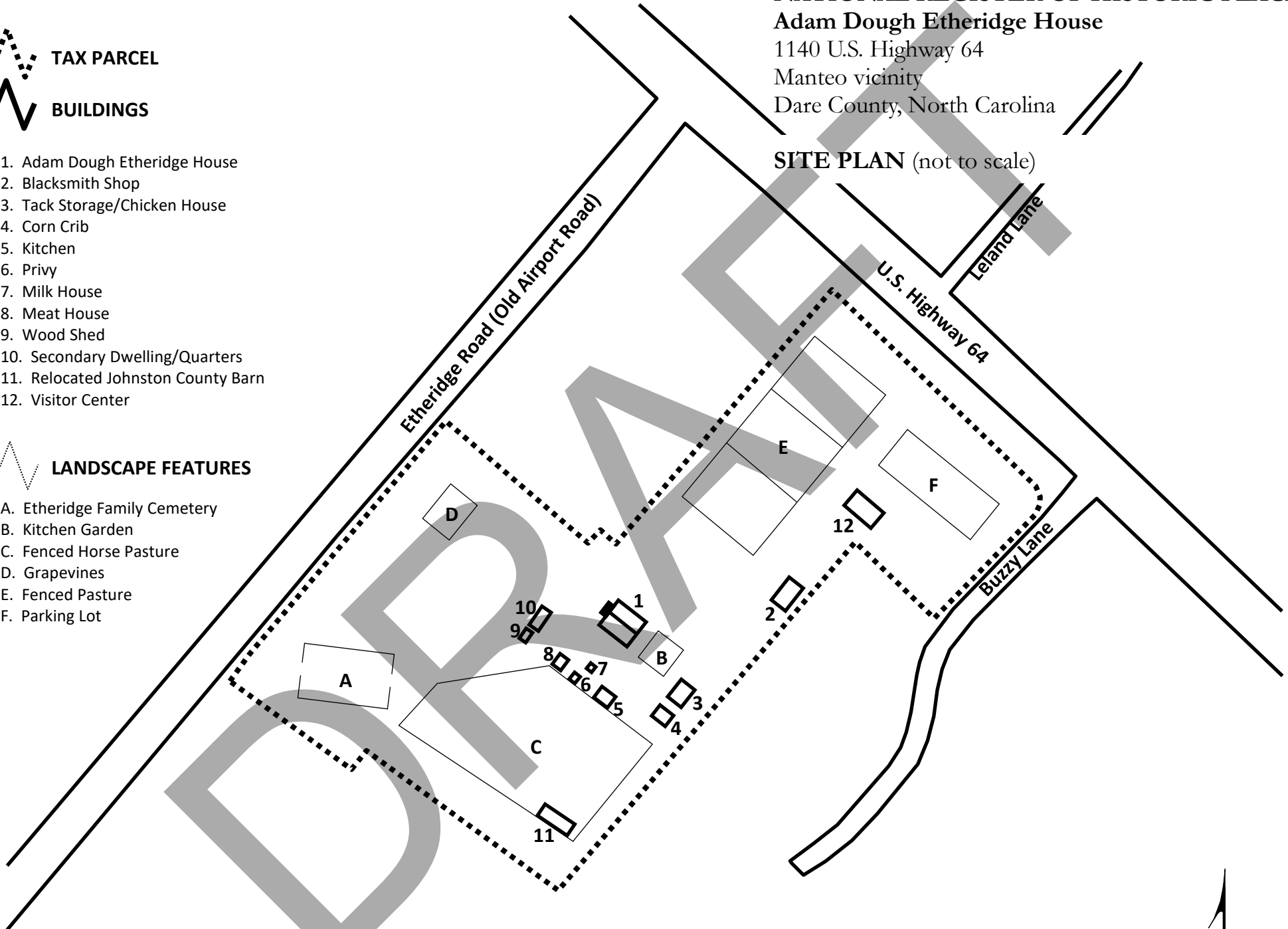
SITE PLAN (not to scale)



1. Adam Dough Etheridge House
2. Blacksmith Shop
3. Tack Storage/Chicken House
4. Corn Crib
5. Kitchen
6. Privy
7. Milk House
8. Meat House
9. Wood Shed
10. Secondary Dwelling/Quarters
11. Relocated Johnston County Barn
12. Visitor Center



- A. Etheridge Family Cemetery
- B. Kitchen Garden
- C. Fenced Horse Pasture
- D. Grapevines
- E. Fenced Pasture
- F. Parking Lot



NATIONAL REGISTER OF HISTORIC PLACES

Adam Dough Etheridge House

1140 U.S. Highway 64

Manteo vicinity

Dare County, North Carolina

KEY TO EXTERIOR PHOTOS

(not to scale)



Photo number and direction



NATIONAL REGISTER OF HISTORIC PLACES

Adam Dough Etheridge House

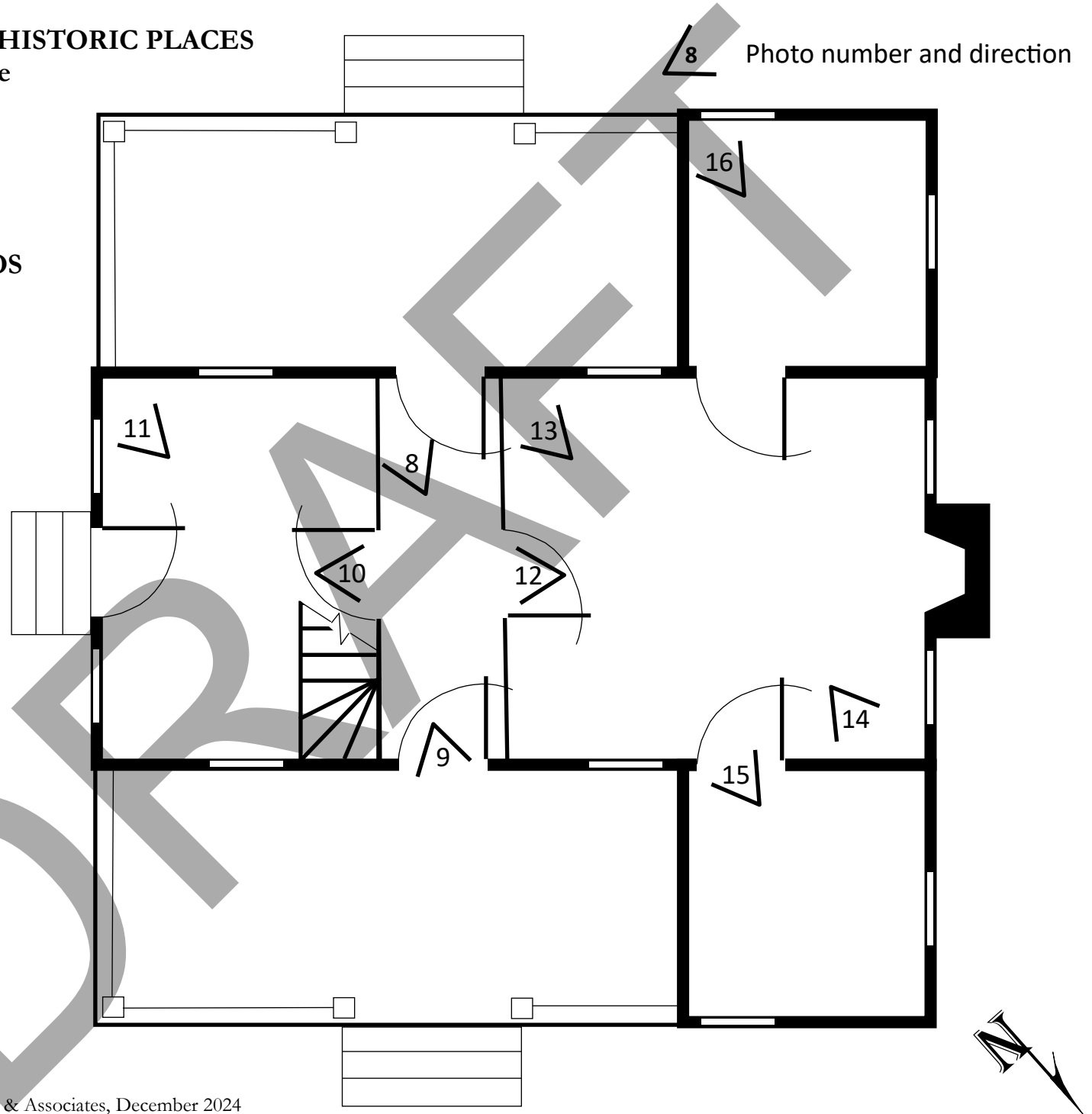
1140 U.S. Highway 64

Manteo vicinity

Dare County, North Carolina

**FIRST FLOOR PLAN and
KEY TO INTERIOR PHOTOS**

(not to scale)



NATIONAL REGISTER OF HISTORIC PLACES

Adam Dough Etheridge House

1140 U.S. Highway 64

Manteo vicinity

Dare County, North Carolina

**SECOND FLOOR PLAN and
KEY TO INTERIOR PHOTOS**

(not to scale)

17 Photo number and direction

