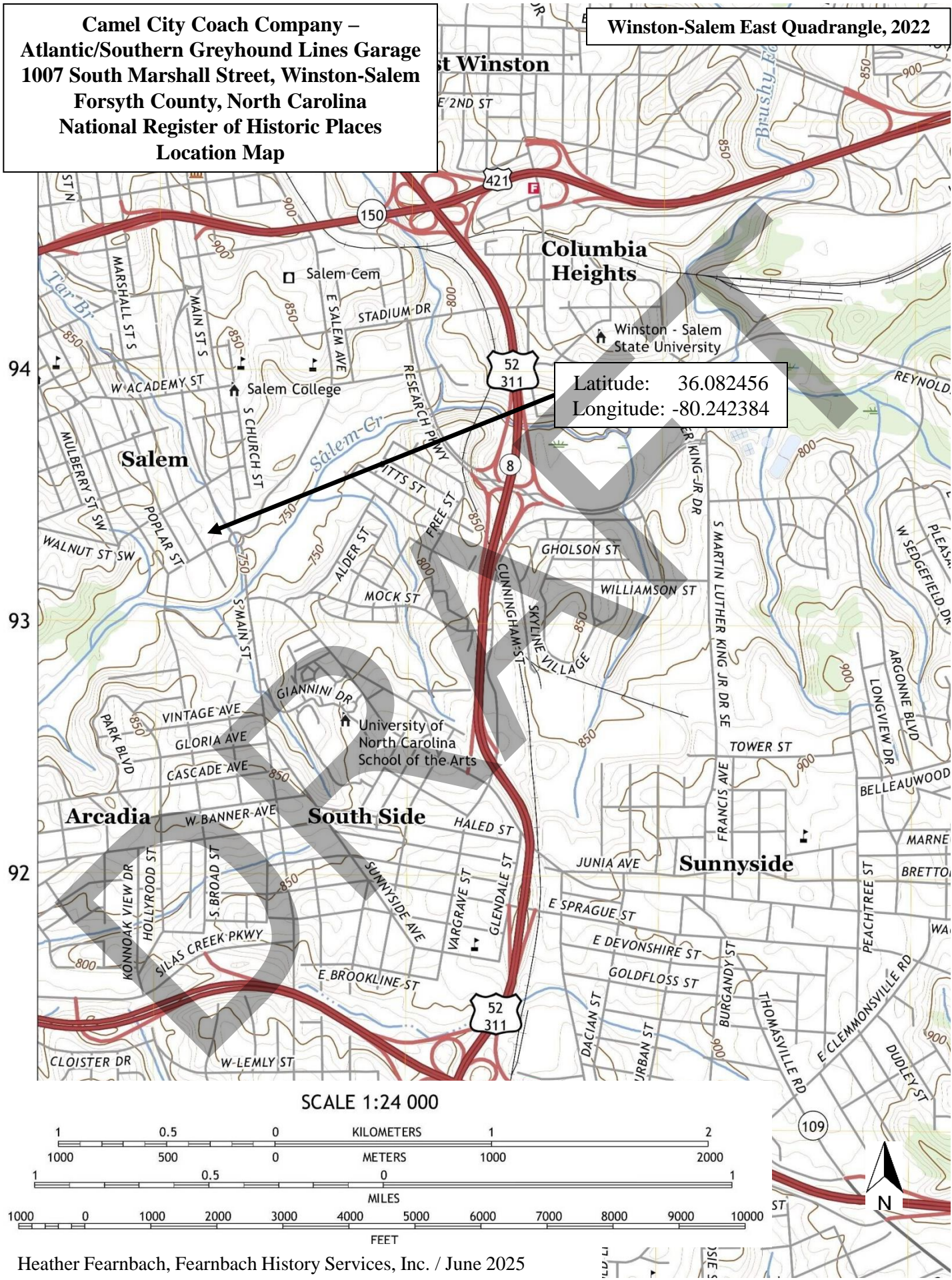
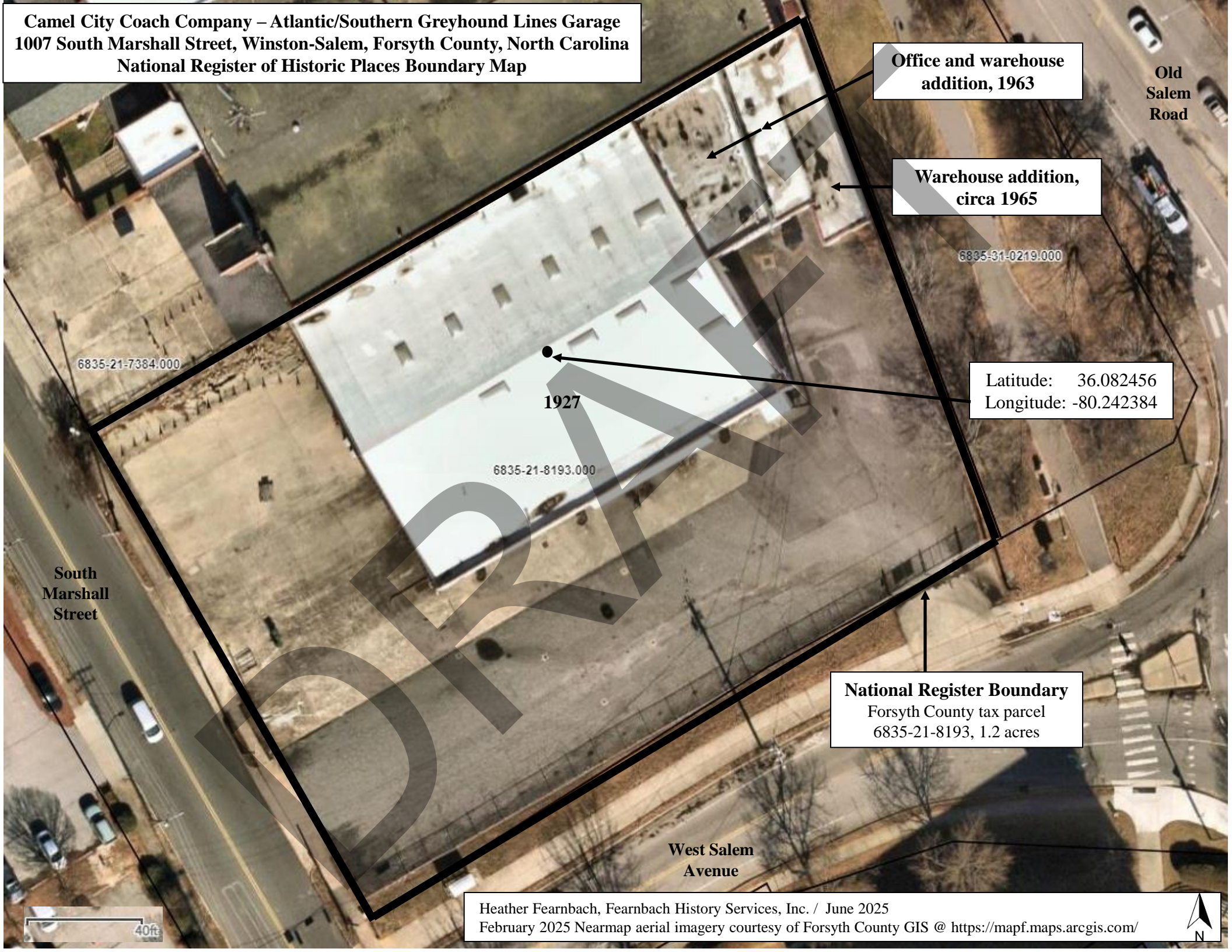


**Camel City Coach Company –
Atlantic/Southern Greyhound Lines Garage
1007 South Marshall Street, Winston-Salem
Forsyth County, North Carolina
National Register of Historic Places
Location Map**

Winston-Salem East Quadrangle, 2022



Camel City Coach Company – Atlantic/Southern Greyhound Lines Garage
1007 South Marshall Street, Winston-Salem, Forsyth County, North Carolina
National Register of Historic Places Boundary Map



**Office and warehouse
addition, 1963**

**Warehouse addition,
circa 1965**

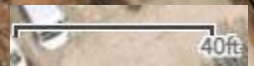
Latitude: 36.082456
Longitude: -80.242384

National Register Boundary
Forsyth County tax parcel
6835-21-8193, 1.2 acres

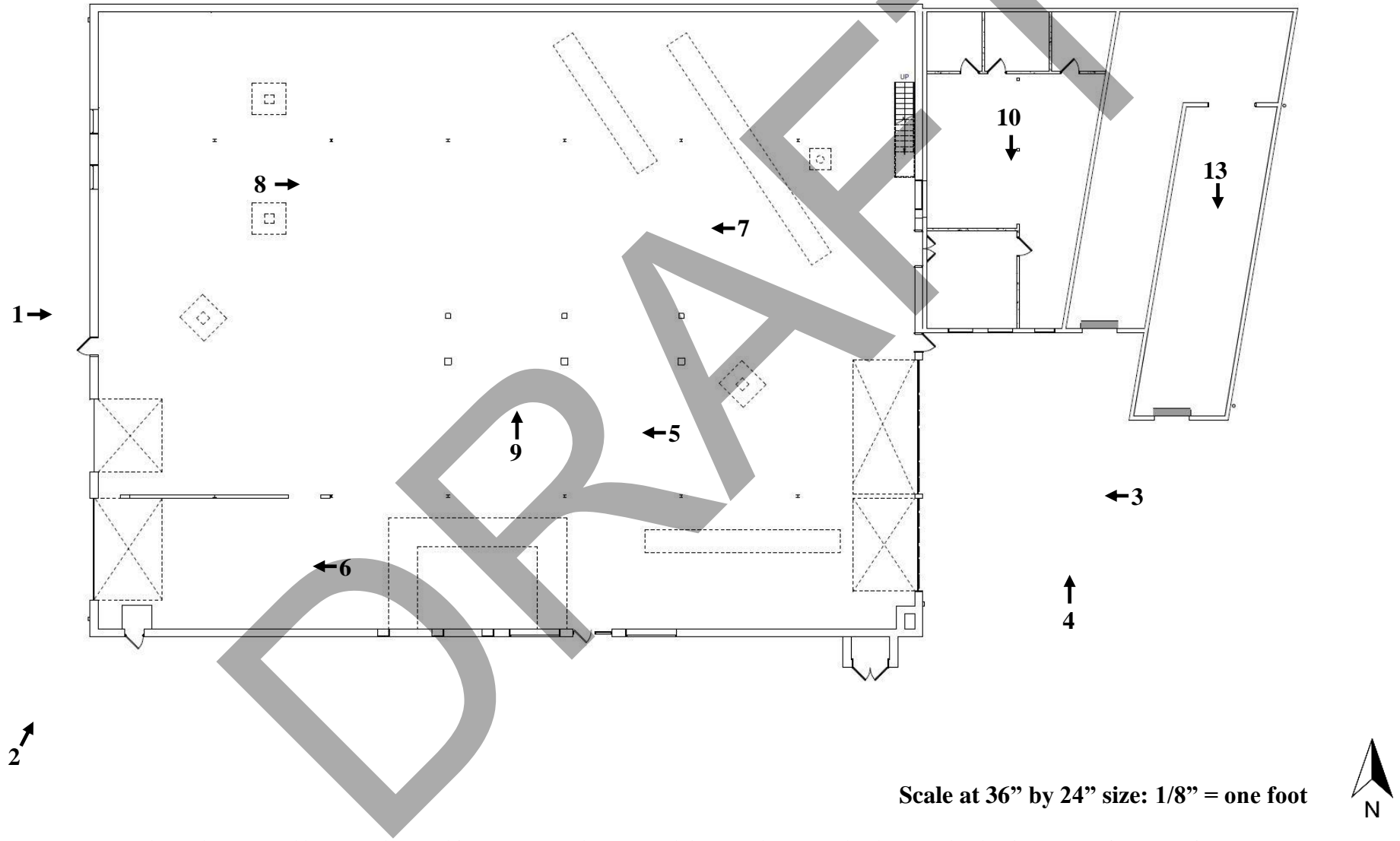
Old
Salem
Road

South
Marshall
Street

West Salem
Avenue



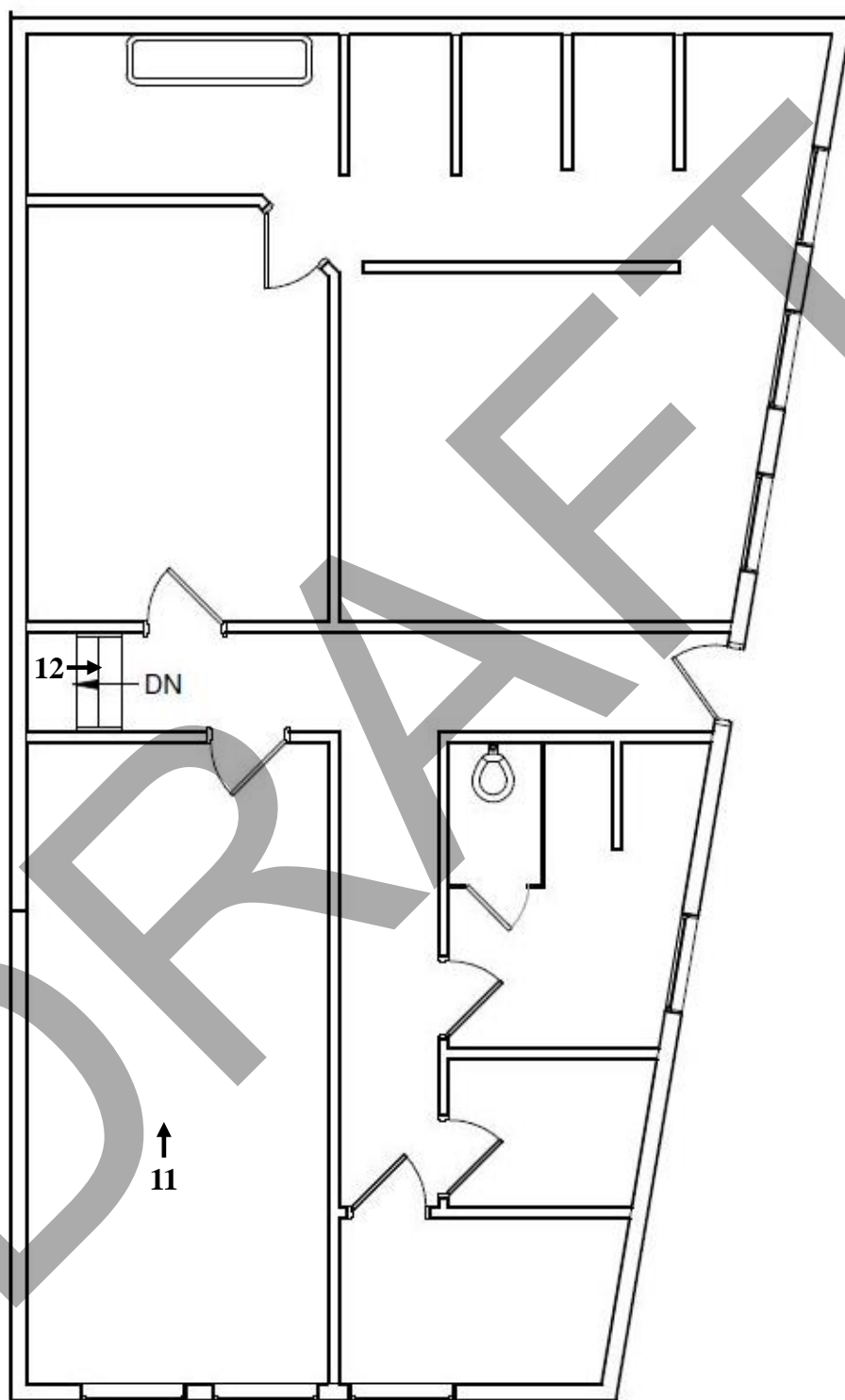
Camel City Coach Company – Atlantic/Southern Greyhound Lines Garage
1007 South Marshall Street, Winston-Salem, Forsyth County, North Carolina
National Register of Historic Places Photograph Key - First Floor



Scale at 36" by 24" size: 1/8" = one foot

Floor plan created by Foundry Architects, Inc. and annotated by Heather Fearnbach, Fearnbach History Services, Inc. in June 2025

**Camel City Coach Company – Atlantic/Southern Greyhound Lines Garage
1007 South Marshall Street, Winston-Salem, Forsyth County, North Carolina
National Register of Historic Places Photograph Key - Second Floor**



Floor plan created by Foundry Architects, Inc. and annotated by
Heather Fearnbach, Fearnbach History Services, Inc. in June 2025

Scale at 36" by 24" size:
1/8" = one foot

