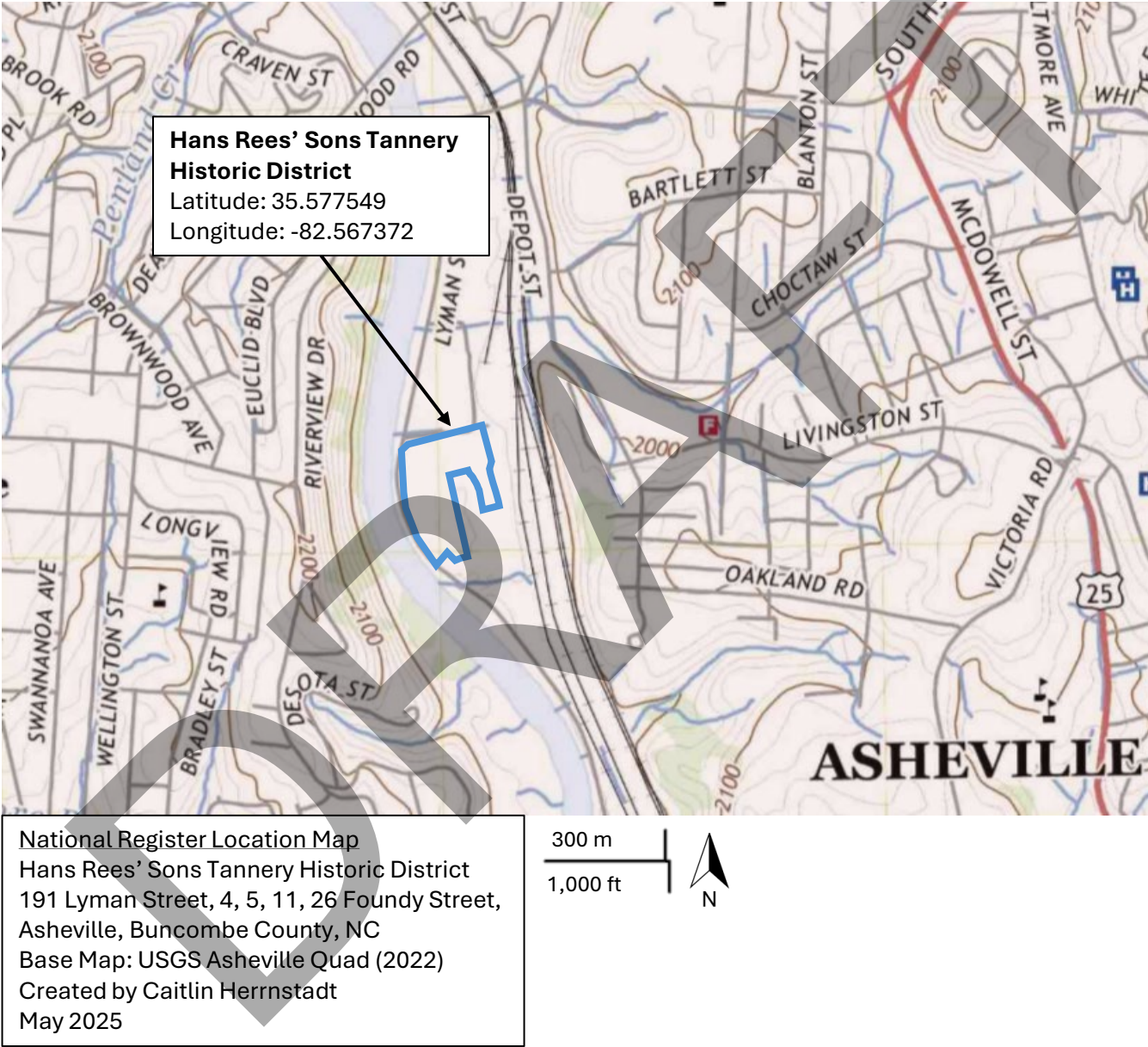


Figure 1: Contextual Map, showing the Hans Rees’ Sons Tannery HD with GPS point



## National Register Boundary



Hans Rees' Sons Tannery Historic District  
191 Lyman Street, 4, 5, 11, 26 Foundy Street,  
Asheville, Buncombe County, NC  
Base map: Buncombe County GIS, Post Helene  
2024 Imagery  
Created by Caitlin Herrnstadt  
May 2025



### Resource Key\*

**Parcel #96389349750000:** 191 Lyman Street

- 1. Leather Warehouse (C)
- 2a. Scouring & Rolling House / 2b. Currying Shop (C)
- 3. Modern Warehouse (NC)

**Parcel #963894628200000:** 4 Foundy Street

- 4. Tannery Washroom/Locker Room (C)

**Parcel #963893987400000:**

5 Foundy Street

- 5a. Tannery Office/ 5b. Brick Warehouse and  
Experimental Tan Yard (C)

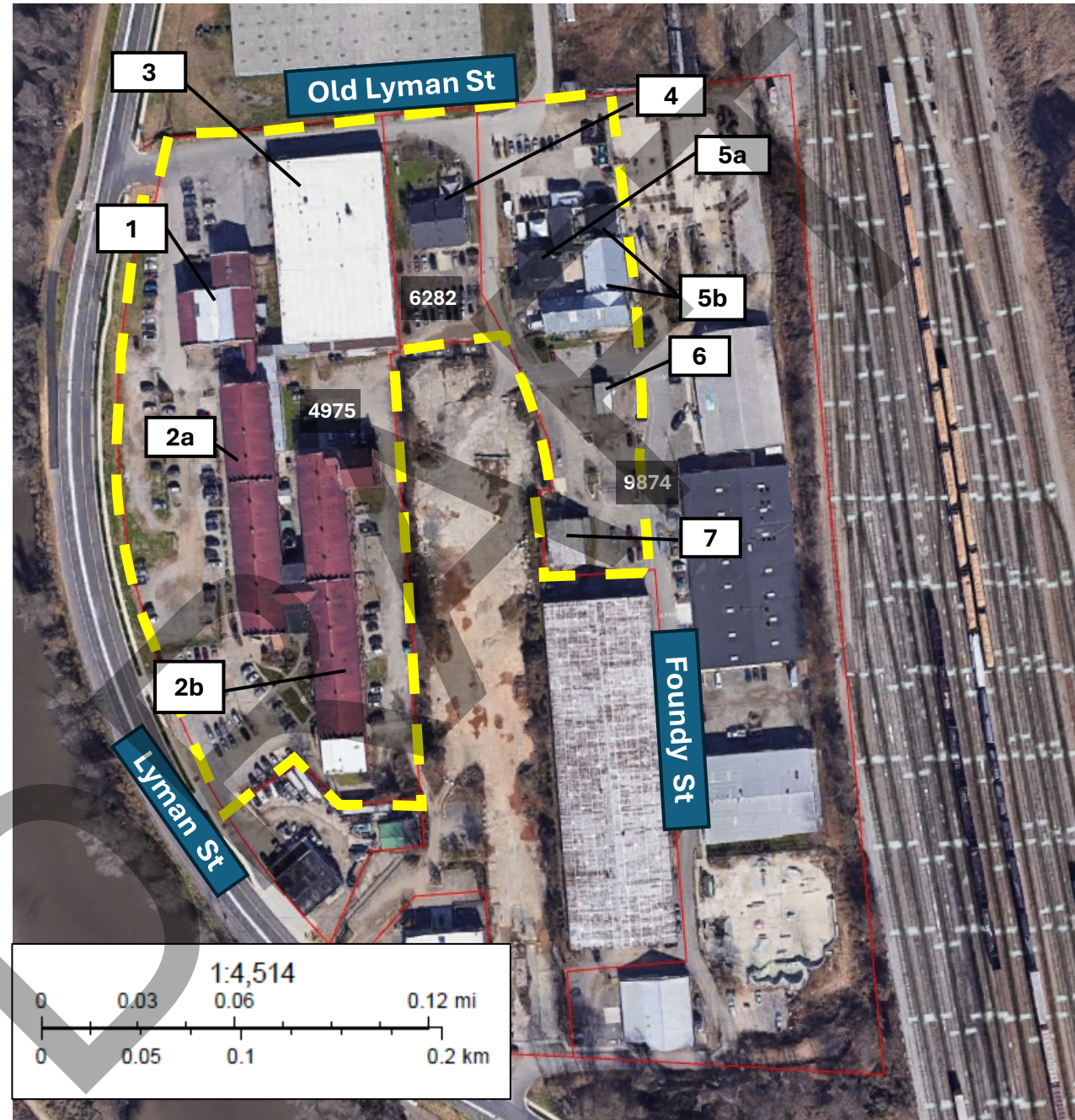
11 Foundy Street

- 6. Blacksmith Shop (C)

26 Foundy Street

- 7. Engine Room/Power House (C)

\*C = contributing building/NC = noncontributing building  
(6 Contributing and 1 Noncontributing = 7 Total Buildings)



**Photo Key 1: Exterior, 191 Lyman Street**

Hans Rees' Sons Historic District

Leather Warehouse, Scouring and Rolling House and Currying House, and Modern Warehouse

Photos 1-7



**Photo Key 2: Exterior, 4, 5, 11, 26 Foundy Street**

Hans Rees' Sons Historic District

Washroom, Office, Brick Warehouse, Blacksmith Shop, Engine Room

Photos 8-14

