

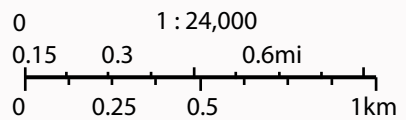
National Register of Historic Places Nomination

House in the Horseshoe

288 Alston House Road, Sanford vicinity
 Moore County, North Carolina

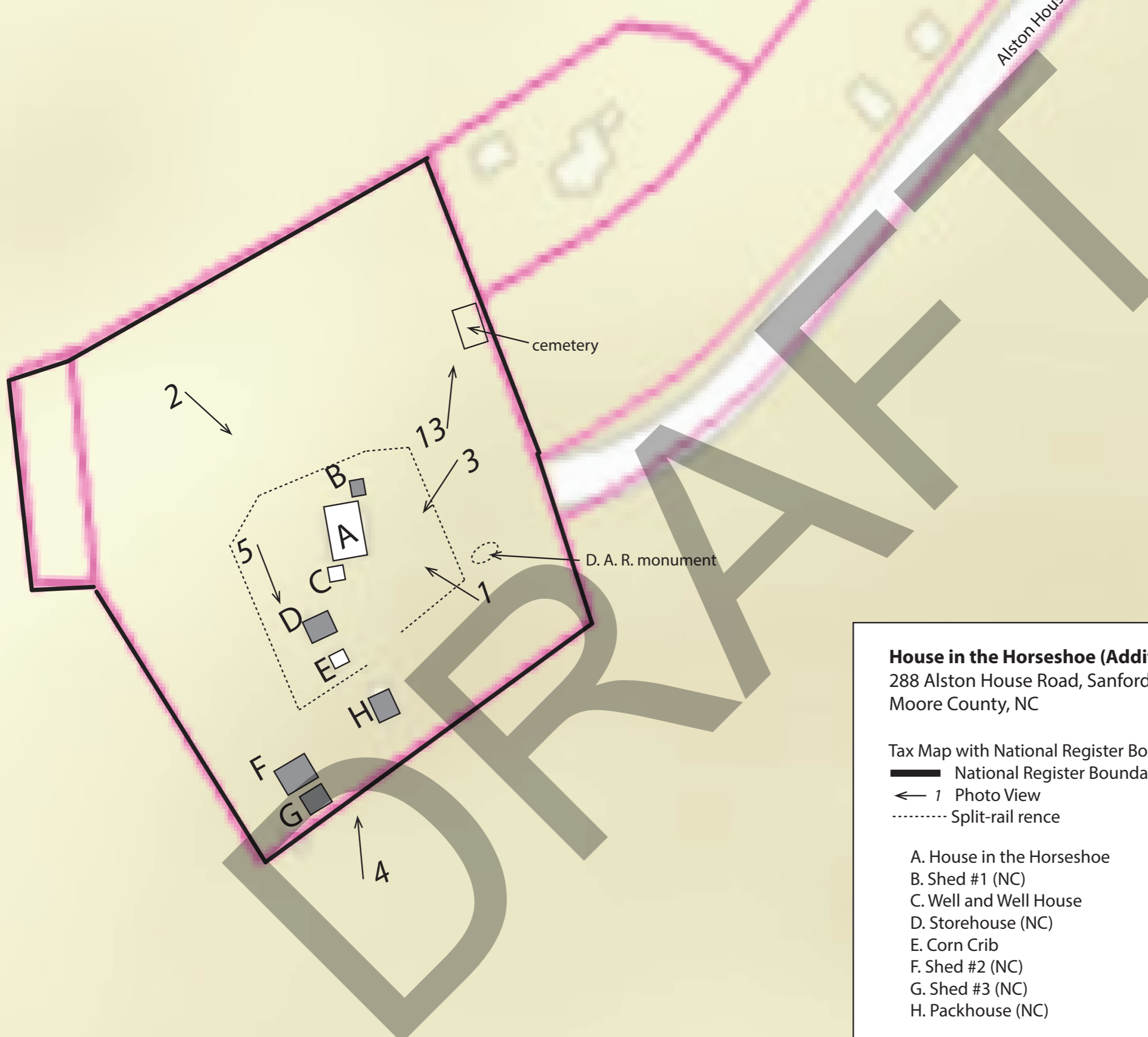
National Register Location Map

Prepared by hmwPreservation 2024 utilizing the Putnam 1974 USGS 7.5minute map



★ Location of NR Property





House in the Horseshoe (Additional Documentation)

288 Alston House Road, Sanford vicinity,
Moore County, NC



Tax Map with National Register Boundary

— National Register Boundary

← 1 Photo View

- - - - - Split-rail fence

A. House in the Horseshoe

B. Shed #1 (NC)

C. Well and Well House

D. Storehouse (NC)

E. Corn Crib

F. Shed #2 (NC)

G. Shed #3 (NC)

H. Packhouse (NC)

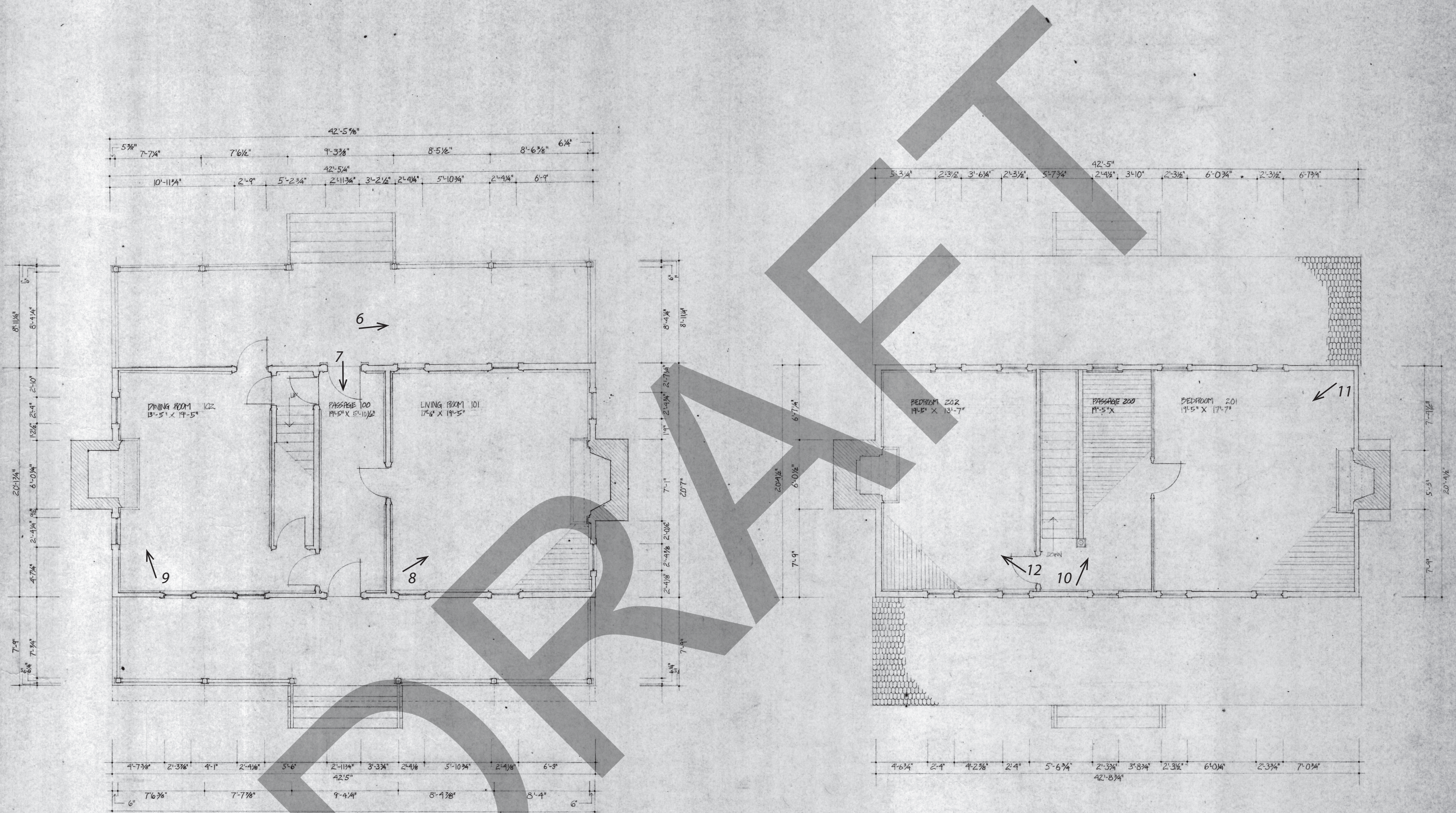
Latitude/Longitude Coordinates

Latitude: 35.466878 Longitude: -79.383991

Scale: 1" = 100'



Map prepared 2025 by hmwPreservation
Image from North Carolina HPOweb

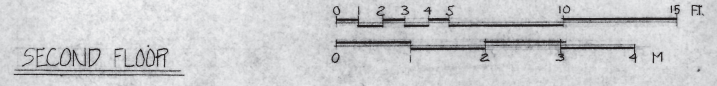


House in the Horseshoe (Additional Documentation)
 288 Alston House Road, Sanford vicinity,
 Moore County, NC

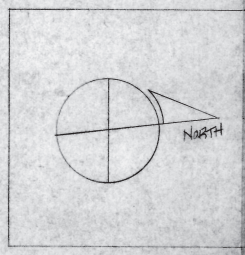
FLOOR PLAN
 ← 1 Photo View

North ↗

Floor Plans created in 1979 by
 NC Dept of Cultural Resources - Historic Sites



SECOND FLOOR



HOUSE IN THE HORSESHOE		ALSTON HOUSE	
STATE	HISTORIC	SITE	RECORD DRAWING
ROUTE 3, Box 924 SANFORD, NC 27330		FLOOR PLANS	
measured by: D. Murphy - SVAHNE		date: JUNE 1979	
N.C. DEPT. OF CULTURAL RESOURCES - HISTORIC SITES		scale: 1/4" = 1'-0"	
			3/13